

IP6K2 Rabbit Polyclonal Antibody



CAB13427

Product Information

Size:

20uL, 50uL, 100uL, 200uL

Observed MW:

Calculated MW:

8kDa/9kDa/11kDa/20kDa/21kDa/49kDa

Applications:

IF

Reactivity:

Human

Antibody Information

Recommended dilutions:

IF 1:50 - 1:200

Source:

Rabbit

Isotype:

IgG

Purification:

Affinity purification

Protein Background

This gene encodes a protein that belongs to the inositol phosphokinase (IPK) family. This protein is likely responsible for the conversion of inositol hexakisphosphate (InsP6) to diphosphoinositol pentakisphosphate (InsP7/PP-InsP5). It may also convert 1, 3, 4, 5, 6-pentakisphosphate (InsP5) to PP-InsP4 and affect the growth suppressive and apoptotic activities of interferon-beta in some ovarian cancers. Alternative splicing results in multiple transcript variants encoding different isoforms.

Immunogen information

Gene ID:

51447

Uniprot

Q9UHH9

Synonyms:

IP6K2; IHPK2; PIUS

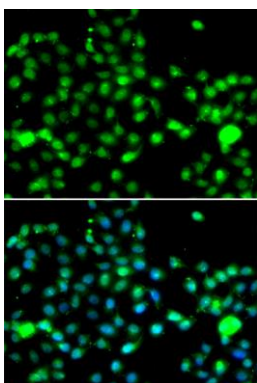
Immunogen:

Recombinant fusion protein containing a sequence corresponding to amino acids 1-180 of human IP6K2 (NP_057375.2).

Storage:

Store at -20°C. Avoid freeze / thaw cycles. Buffer: PBS with 0.02% sodium azide, 50% glycerol, pH7.3.

Product Images



Immunofluorescence analysis of A549 cells using IP6K2 antibody (CAB13427). Blue: DAPI for nuclear staining.