

# SUFU Rabbit Polyclonal Antibody



CAB13429

## Product Information

### Size:

20uL

### Observed MW:

54kDa

### Calculated MW:

54kDa

### Applications:

WB IHC-P, IF/ICC

### Reactivity:

Human, Mouse, Rat

### Category:

Primary Antibody

## Antibody Information

### Recommended dilutions:

WB 1:500 - 1:2000  
IHC 1:50 - 1:200  
IF 1:50 - 1:200

### Source:

Rabbit

### Isotype:

IgG

### Purification:

Affinity purification

## Protein Background

The Hedgehog signaling pathway plays an important role in early human development. The pathway is a signaling cascade that plays a role in pattern formation and cellular proliferation during development. This gene encodes a negative regulator of the hedgehog signaling pathway. Defects in this gene are a cause of medulloblastoma. Alternative splicing results in multiple transcript variants.

## Immunogen information

### Gene ID:

51684

### Uniprot

Q9UMX1

### Synonyms:

SUFUH; JBTS32; SUFUXL; PRO1280

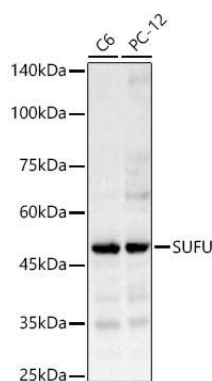
### Immunogen:

Recombinant fusion protein containing a sequence corresponding to amino acids 325-484 of human SUFU (NP\_057253.2).

### Storage:

Store at -20°C. Avoid freeze / thaw cycles. Buffer: PBS with 0.02% sodium azide, 50% glycerol, pH7.3.

## Product Images



Western blot analysis of various lysates, using SUFU Rabbit pAb (CAB13429) at 1:1000 dilution.

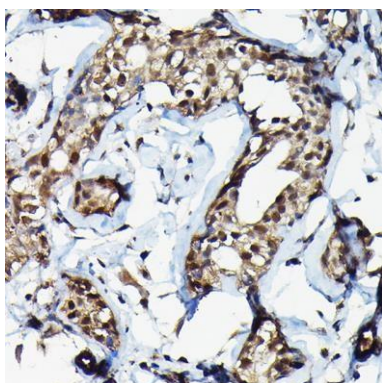
Secondary antibody: HRP Goat Anti-Rabbit IgG (H+L) (CABS014) at 1:10000 dilution.

Lysates/proteins: 25µg per lane.

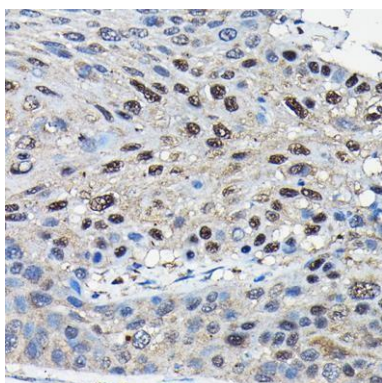
Blocking buffer: 3% nonfat dry milk in TBST.

Detection: ECL Enhanced Kit (AbGn00021).

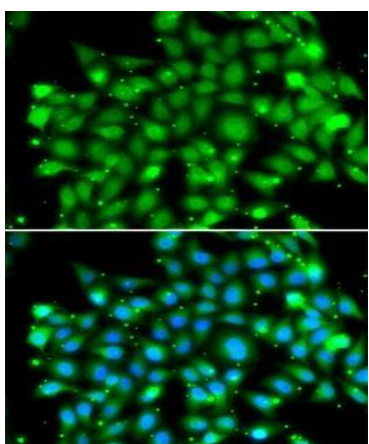
Exposure time: 10s.



Immunohistochemistry analysis of paraffin-embedded human breast cancer using SUFU Rabbit pAb (CAB13429) at dilution of 1:100 (40x lens). Perform high pressure antigen retrieval with 10 mM citrate buffer pH 6.0 before commencing with IHC staining protocol.



Immunohistochemistry analysis of paraffin-embedded human esophageal cancer using SUFU Rabbit pAb (CAB13429) at dilution of 1:100 (40x lens). Perform high pressure antigen retrieval with 10 mM citrate buffer pH 6.0 before commencing with IHC staining protocol.



Immunofluorescence analysis of MCF-7 cells using SUFU antibody (CAB13429). Blue: DAPI for nuclear staining.