

[KO Validated] Cytochrome c Rabbit Polyclonal Antibody

CAB13430



Product Information

Size:

20uL, 50uL, 100uL, 200uL

Observed MW:

11KDa

Calculated MW:

11kDa

Applications:

WB IHC IF

Reactivity:

Human, Mouse, Rat

Protein Background

This gene encodes a small heme protein that functions as a central component of the electron transport chain in mitochondria. The encoded protein associates with the inner membrane of the mitochondrion where it accepts electrons from cytochrome b and transfers them to the cytochrome oxidase complex. This protein is also involved in initiation of apoptosis. Mutations in this gene are associated with autosomal dominant nonsyndromic thrombocytopenia. Numerous processed pseudogenes of this gene are found throughout the human genome.

Immunogen information

Gene ID:

54205

Uniprot

P99999

Synonyms:

CYCS; CYC; HCS; THC4; cytochrome c

Antibody Information

Recommended dilutions:

WB 1:500 - 1:2000 IHC 1:50
- 1:200 IF 1:50 - 1:200

Source:

Rabbit

Isotype:

IgG

Purification:

Affinity purification

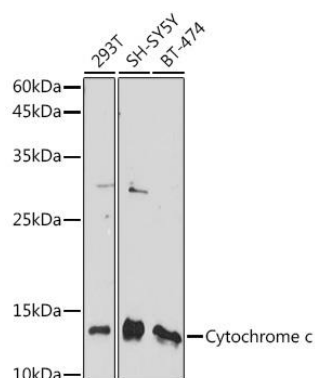
Immunogen:

Recombinant fusion protein containing a sequence corresponding to amino acids 1-105 of human Cytochrome c (NP_061820.1).

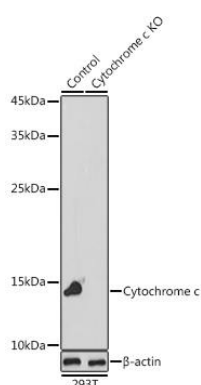
Storage:

Store at -20°C. Avoid freeze / thaw cycles. Buffer: PBS with 0.02% sodium azide, 50% glycerol, pH7.3.

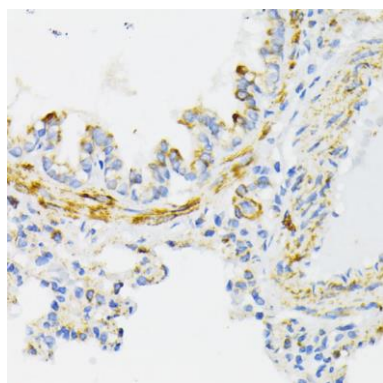
Product Images



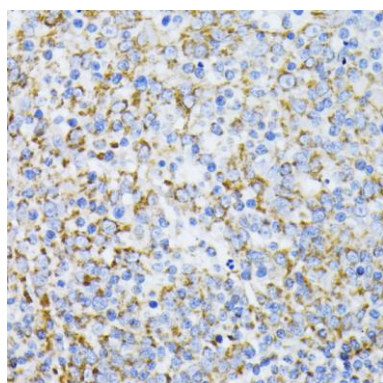
Western blot analysis of extracts of various cell lines, using Cytochrome c Rabbit pAb (CAB13430) at 1:1000 dilution. Secondary antibody: HRP Goat Anti-Rabbit IgG (H+L) (CABS014) at 1:10000 dilution. Lysates/proteins: 25ug per lane. Blocking buffer: 3% nonfat dry milk in TBST. Detection: ECL Basic Kit (CABM00020). Exposure time: 60s.



Western blot analysis of extracts from normal (control) and Cytochrome c knockout (KO) 293T cells, using Cytochrome c antibody (CAB13430) at 1:1000 dilution. Secondary antibody: HRP Goat Anti-Rabbit IgG (H+L) (CABS014) at 1:10000 dilution. Lysates/proteins: 25ug per lane. Blocking buffer: 3% nonfat dry milk in TBST. Detection: ECL Basic Kit (CABM00020). Exposure time: 90s.



Immunohistochemistry of paraffin-embedded rat lung using Cytochrome c antibody (CAB13430) at dilution of 1:100 (40x lens).



Immunohistochemistry of paraffin-embedded human tonsil using Cytochrome c antibody (CAB13430) at dilution of 1:100 (40x lens).