

# DIABLO Rabbit Polyclonal Antibody



CAB13432

## Product Information

### Size:

20uL, 50uL, 100uL, 200uL

### Observed MW:

### Calculated MW:

21kDa/22kDa/27kDa

### Applications:

IF

### Reactivity:

Human

## Antibody Information

### Recommended dilutions:

IF 1:50 - 1:200

### Source:

Rabbit

### Isotype:

IgG

### Purification:

Affinity purification

## Protein Background

This gene encodes an inhibitor of apoptosis protein (IAP)-binding protein. The encoded mitochondrial protein enters the cytosol when cells undergo apoptosis, and allows activation of caspases by binding to inhibitor of apoptosis proteins. Overexpression of the encoded protein sensitizes tumor cells to apoptosis. A mutation in this gene is associated with young-adult onset of nonsyndromic deafness-64. Alternative splicing results in multiple transcript variants encoding different isoforms.

## Immunogen information

### Gene ID:

56616

### Uniprot

Q9NR28

### Synonyms:

DIABLO; DFNA64; SMAC

### Immunogen:

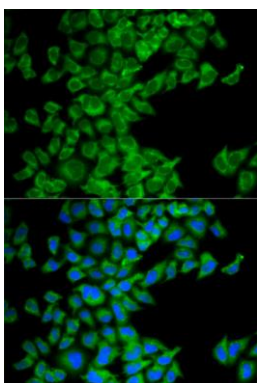
Recombinant fusion protein containing a sequence corresponding to amino acids 1-232 of human DIABLO (NP\_063940.1).

### Storage:

Store at -20°C. Avoid freeze / thaw cycles. Buffer: PBS with 0.02% sodium azide, 50% glycerol, pH7.3.

## Product Images

---



Immunofluorescence analysis of MCF-7 cells using DIABLO antibody (CAB13432). Blue: DAPI for nuclear staining.