

MTUS1 Rabbit Polyclonal Antibody



CAB13437

Product Information

Size:

20uL, 50uL, 100uL, 200uL

Observed MW:

141kDa

Calculated MW:

39kDa/48kDa/50kDa/58kDa/
84kDa/135kDa/141kDa

Applications:

WB IF

Reactivity:

Human

Antibody Information

Recommended dilutions:

WB 1:500 - 1:2000 IF 1:50 -
1:200

Source:

Rabbit

Isotype:

IgG

Purification:

Affinity purification

Protein Background

This gene encodes a protein which contains a C-terminal domain able to interact with the angiotension II (AT2) receptor and a large coiled-coil region allowing dimerization. Multiple alternatively spliced transcript variants encoding different isoforms have been found for this gene. One of the transcript variants has been shown to encode a mitochondrial protein that acts as a tumor suppressor and participates in AT2 signaling pathways. Other variants may encode nuclear or transmembrane proteins but it has not been determined whether they also participate in AT2 signaling pathways.

Immunogen information

Gene ID:

57509

Uniprot

Q9ULD2

Synonyms:

MTUS1; ATBP; ATIP; ATIP3; ICIS; MP44; MTSG1

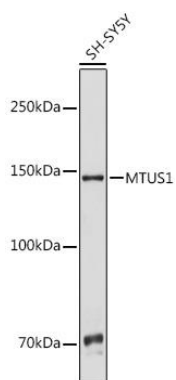
Immunogen:

Recombinant fusion protein containing a sequence corresponding to amino acids 207-436 of human MTUS1 (NP_065800.1).

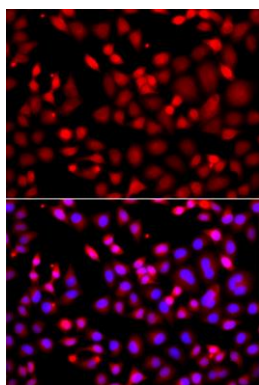
Storage:

Store at -20°C. Avoid freeze / thaw cycles. Buffer: PBS with 0.02% sodium azide, 50% glycerol, pH7.3.

Product Images



Western blot analysis of extracts of SH-SY5Y cells, using MTUS1 antibody (CAB13437) at 1:1000 dilution. Secondary antibody: HRP Goat Anti-Rabbit IgG (H+L) (CABS014) at 1:10000 dilution. Lysates/proteins: 25ug per lane. Blocking buffer: 3% nonfat dry milk in TBST. Detection: ECL Basic Kit (CABM00020). Exposure time: 3s.



Immunofluorescence analysis of A549 cells using MTUS1 antibody (CAB13437). Blue: DAPI for nuclear staining.