

# SETD6 Rabbit Polyclonal Antibody



CAB13439

---

## Product Information

### Size:

20uL, 50uL, 100uL, 200uL

### Observed MW:

Refer to figures

### Calculated MW:

50kDa/53kDa

### Applications:

WB IF

### Reactivity:

Human

## Antibody Information

### Recommended dilutions:

WB 1:500 - 1:2000 IF 1:50 - 1:200

### Source:

Rabbit

### Isotype:

IgG

### Purification:

Affinity purification

## Protein Background

This gene encodes a methyltransferase that adds a methyl group to the histone H2AZ, which is involved in nuclear receptor-dependent transcription. The protein also interacts with several endogenous proteins which are involved in nuclear hormone receptor signaling. A related pseudogene is located on chromosome 2. Alternative splicing results in multiple transcript variants.

## Immunogen information

### Gene ID:

79918

### Uniprot

Q8TBK2

### Synonyms:

SETD6

### Immunogen:

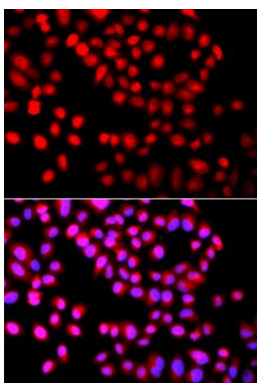
Recombinant fusion protein containing a sequence corresponding to amino acids 145-410 of human SETD6 (NP\_001153777.1).

### Storage:

Store at -20°C. Avoid freeze / thaw cycles. Buffer: PBS with 0.02% sodium azide, 50% glycerol, pH7.3.

## Product Images

---



Immunofluorescence analysis of A549 cells using SETD6 antibody (CAB13439). Blue: DAPI for nuclear staining.