

# PTGES2 Rabbit Polyclonal Antibody



CAB13440

## Product Information

### Size:

20uL, 50uL, 100uL, 200uL

### Observed MW:

34kDa

### Calculated MW:

41kDa

### Applications:

WB IF

### Reactivity:

Human, Mouse, Rat

## Protein Background

The protein encoded by this gene is a membrane-associated prostaglandin E synthase, which catalyzes the conversion of prostaglandin H2 to prostaglandin E2. This protein also has been shown to activate the transcription regulated by a gamma-interferon-activated transcription element (GATE). Multiple transcript variants have been found for this gene.

## Immunogen information

### Gene ID:

80142

### Uniprot

Q9H7Z7

### Synonyms:

PTGES2; C9orf15; GBF-1; GBF1; PGES2; mPGES-2

## Antibody Information

### Recommended dilutions:

WB 1:500 - 1:2000 IF 1:50 - 1:200

### Source:

Rabbit

### Isotype:

IgG

### Purification:

Affinity purification

### Immunogen:

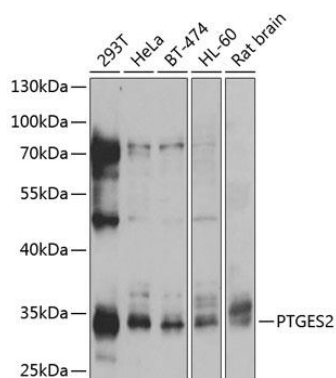
Recombinant fusion protein containing a sequence corresponding to amino acids 88-377 of human PTGES2 (NP\_079348.1).

### Storage:

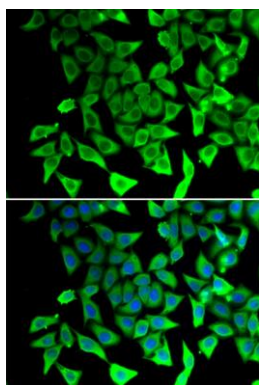
Store at -20°C. Avoid freeze / thaw cycles. Buffer: PBS with 0.02% sodium azide, 50% glycerol, pH7.3.

## Product Images

---



Western blot analysis of extracts of various cell lines, using PTGES2 antibody (CAB13440) at 1:1000 dilution. Secondary antibody: HRP Goat Anti-Rabbit IgG (H+L) (CABS014) at 1:10000 dilution. Lysates/proteins: 25ug per lane. Blocking buffer: 3% nonfat dry milk in TBST. Detection: ECL Basic Kit (CABM00020). Exposure time: 5s.



Immunofluorescence analysis of A549 cells using PTGES2 antibody (CAB13440). Blue: DAPI for nuclear staining.