

ACCS Rabbit Polyclonal Antibody



CAB13441

Product Information

Size:

20uL, 50uL, 100uL, 200uL

Observed MW:

57kDa

Calculated MW:

17kDa/57kDa

Applications:

WB IHC IF

Reactivity:

Human, Mouse

Antibody Information

Recommended dilutions:

WB 1:500 - 1:2000 IHC 1:50
- 1:200 IF 1:50 - 1:200

Source:

Rabbit

Isotype:

IgG

Purification:

Affinity purification

Protein Background

Immunogen information

Gene ID:

84680

Uniprot

Q96QU6

Synonyms:

ACCS; ACS; PHACS

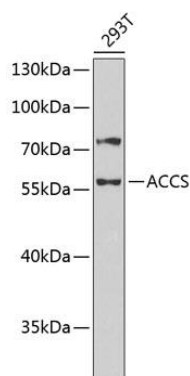
Immunogen:

Recombinant fusion protein containing a sequence corresponding to amino acids 222-501 of human ACCS (NP_115981.1).

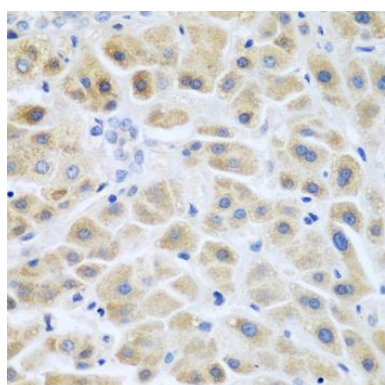
Storage:

Store at -20°C. Avoid freeze / thaw cycles. Buffer: PBS with 0.02% sodium azide, 50% glycerol, pH7.3.

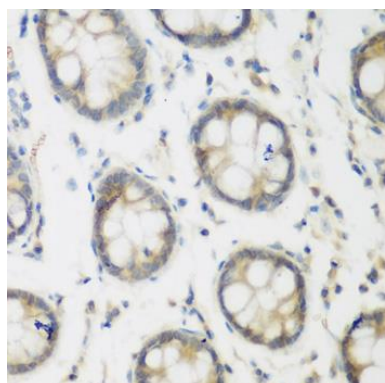
Product Images



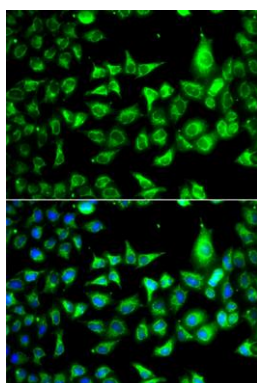
Western blot analysis of extracts of 293T cells, using ACCS antibody (CAB13441) at 1:1000 dilution. Secondary antibody: HRP Goat Anti-Rabbit IgG (H+L) (CABS014) at 1:10000 dilution. Lysates/proteins: 25ug per lane. Blocking buffer: 3% nonfat dry milk in TBST. Detection: ECL Basic Kit (CABM00020). Exposure time: 30s.



Immunohistochemistry of paraffin-embedded human liver cancer using ACCS antibody (CAB13441) at dilution of 1:200 (40x lens).



Immunohistochemistry of paraffin-embedded human colon using ACCS antibody (CAB13441) at dilution of 1:200 (40x lens).



Immunofluorescence analysis of A549 cells using ACCS antibody (CAB13441). Blue: DAPI for nuclear staining.