

TIM-3/HAVCR2 Rabbit Polyclonal Antibody



CAB13443

Product Information

Size:

20uL, 50uL, 100uL, 200uL

Observed MW:

45kDa/70kDa

Calculated MW:

85kDa/100kDa/105kDa/106kDa

Applications:

WB IF

Reactivity:

Human, Mouse

Protein Background

The protein encoded by this gene belongs to the immunoglobulin superfamily, and TIM family of proteins. CD4-positive T helper lymphocytes can be divided into types 1 (Th1) and 2 (Th2) on the basis of their cytokine secretion patterns. Th1 cells are involved in cell-mediated immunity to intracellular pathogens and delayed-type hypersensitivity reactions, whereas, Th2 cells are involved in the control of extracellular helminthic infections and the promotion of atopic and allergic diseases. This protein is a Th1-specific cell surface protein that regulates macrophage activation, and inhibits Th1-mediated auto- and alloimmune responses, and promotes immunological tolerance.

Immunogen information

Gene ID:

84868

Uniprot

Q8TDQ0

Synonyms:

HAVCR2; CD366; HAVcr-2; KIM-3; TIM3; TIMD-3; TIMD3; Tim-3

Antibody Information

Recommended dilutions:

WB 1:500 - 1:2000 IF 1:50 - 1:200

Source:

Rabbit

Isotype:

IgG

Purification:

Affinity purification

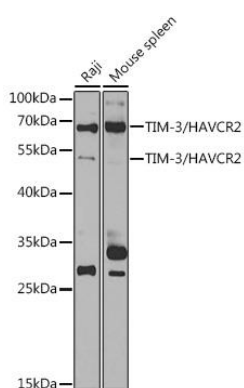
Immunogen:

A synthetic peptide corresponding to a sequence within amino acids 1-100 of human TIM-3/HAVCR2 (NP_116171.3).

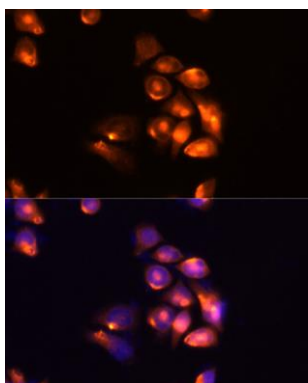
Storage:

Store at -20°C. Avoid freeze / thaw cycles. Buffer: PBS with 0.02% sodium azide, 50% glycerol, pH7.3.

Product Images



Western blot analysis of extracts of various cell lines, using TIM-3/HAVCR2 antibody (CAB13443) at 1:1000 dilution. Secondary antibody: HRP Goat Anti-Rabbit IgG (H+L) (CABS014) at 1:10000 dilution. Lysates/proteins: 25ug per lane. Blocking buffer: 3% nonfat dry milk in TBST. Detection: ECL Basic Kit (CABM00020). Exposure time: 90s.



Immunofluorescence analysis of HeLa cells using TIM-3/HAVCR2 antibody (CAB13443) at dilution of 1:100 (40x lens). Blue: DAPI for nuclear staining.