

BOC Rabbit Polyclonal Antibody



CAB13446

Product Information

Size:

20uL, 50uL, 100uL, 200uL

Observed MW:

121kDa

Calculated MW:

100kDa/121kDa

Applications:

WB IF

Reactivity:

Human, Mouse

Protein Background

The protein encoded by this gene is a member of the immunoglobulin/fibronectin type III repeat family. It is a component of a cell-surface receptor complex that mediates cell-cell interactions between muscle precursor cells, and promotes myogenic differentiation. Alternative splicing results in multiple transcript variants encoding different isoforms.

Immunogen information

Gene ID:

91653

Uniprot

Q9BWW1

Synonyms:

BOC; CDON2

Antibody Information

Recommended dilutions:

WB 1:500 - 1:2000 IF 1:50 - 1:200

Source:

Rabbit

Isotype:

IgG

Purification:

Affinity purification

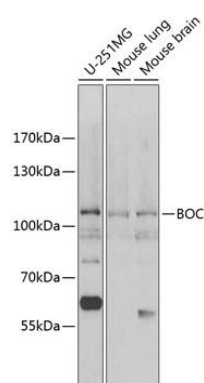
Immunogen:

Recombinant fusion protein containing a sequence corresponding to amino acids 1-125 of human BOC (NP_150279.1).

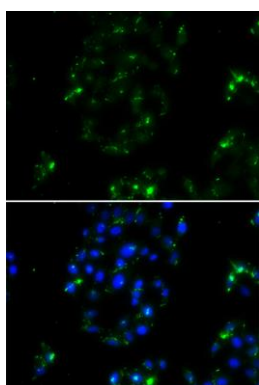
Storage:

Store at -20°C. Avoid freeze / thaw cycles. Buffer: PBS with 0.02% sodium azide, 50% glycerol, pH7.3.

Product Images



Western blot analysis of extracts of various cell lines, using BOC antibody (CAB13446) at 1:1000 dilution. Secondary antibody: HRP Goat Anti-Rabbit IgG (H+L) (CABS014) at 1:10000 dilution. Lysates/proteins: 25ug per lane. Blocking buffer: 3% nonfat dry milk in TBST. Detection: ECL Basic Kit (CABM00020). Exposure time: 60s.



Immunofluorescence analysis of A549 cells using BOC antibody (CAB13446). Blue: DAPI for nuclear staining.