

# BTLA Rabbit Polyclonal Antibody



CAB13449

---

## Product Information

### Size:

20uL, 50uL, 100uL, 200uL

### Observed MW:

33kDa

### Calculated MW:

27kDa/32kDa

### Applications:

WB

### Reactivity:

Human, Mouse

## Protein Background

This gene encodes a member of the immunoglobulin superfamily. The encoded protein contains a single immunoglobulin (Ig) domain and is a receptor that relays inhibitory signals to suppress the immune response. Alternative splicing results in multiple transcript variants. Polymorphisms in this gene have been associated with an increased risk of rheumatoid arthritis.

## Immunogen information

### Gene ID:

151888

### Uniprot

Q7Z6A9

### Synonyms:

BTLA; BTLA1; CD272

## Antibody Information

### Recommended dilutions:

WB 1:500 - 1:2000

### Source:

Rabbit

### Isotype:

IgG

### Purification:

Affinity purification

### Immunogen:

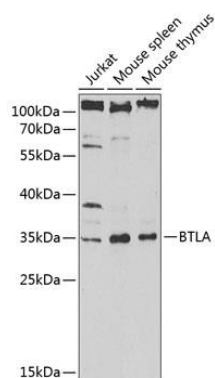
Recombinant fusion protein containing a sequence corresponding to amino acids 31-241 of human BTLA (NP\_001078826.1).

### Storage:

Store at -20°C. Avoid freeze / thaw cycles. Buffer: PBS with 0.02% sodium azide, 50% glycerol, pH7.3.

## Product Images

---



Western blot analysis of extracts of various cell lines, using BTLA antibody (CAB13449) at 1:1000 dilution. Secondary antibody: HRP Goat Anti-Rabbit IgG (H+L) (CABS014) at 1:10000 dilution. Lysates/proteins: 25ug per lane. Blocking buffer: 3% nonfat dry milk in TBST. Detection: ECL Enhanced Kit (CABM00021). Exposure time: 90s.