

# TET3 Rabbit Polyclonal Antibody



CAB13453

---

## Product Information

### Size:

20uL, 50uL, 100uL, 200uL

### Observed MW:

### Calculated MW:

77kDa/166kDa/179kDa

### Applications:

IHC IF

### Reactivity:

Human

## Antibody Information

### Recommended dilutions:

IHC 1:50 - 1:200 IF 1:50 - 1:200

### Source:

Rabbit

### Isotype:

IgG

### Purification:

Affinity purification

## Protein Background

### Immunogen information

#### Gene ID:

200424

#### Uniprot

O43151

#### Synonyms:

TET3; hCG\_40738; TET3

#### Immunogen:

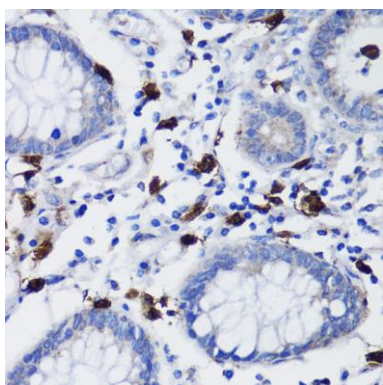
Recombinant fusion protein containing a sequence corresponding to amino acids 1556-1795 of human TET3 (NP\_001274420.1).

#### Storage:

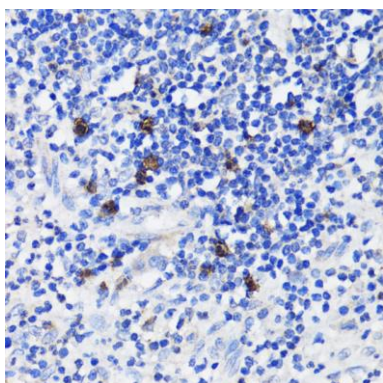
Store at -20°C. Avoid freeze / thaw cycles. Buffer: PBS with 0.02% sodium azide, 50% glycerol, pH7.3.

## Product Images

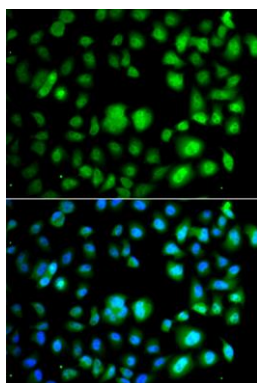
---



Immunohistochemistry of paraffin-embedded human colon carcinoma using TET3 antibody (CAB13453) at dilution of 1:200 (40x lens).



Immunohistochemistry of paraffin-embedded human appendix using TET3 antibody (CAB13453) at dilution of 1:200 (40x lens).



Immunofluorescence analysis of A549 cells using TET3 antibody (CAB13453). Blue: DAPI for nuclear staining.