

NSUN6 Rabbit Polyclonal Antibody



CAB13454

Product Information

Size:

20uL, 50uL, 100uL, 200uL

Observed MW:

52kDa

Calculated MW:

51kDa

Applications:

WB IF

Reactivity:

Human, Mouse

Antibody Information

Recommended dilutions:

WB 1:500 - 1:2000 IF 1:50 - 1:200

Source:

Rabbit

Isotype:

IgG

Purification:

Affinity purification

Protein Background

Immunogen information

Gene ID:

221078

Uniprot

Q8TEA1

Synonyms:

NSUN6; 4933414E04Rik; ARL5B-AS1; NOPD1

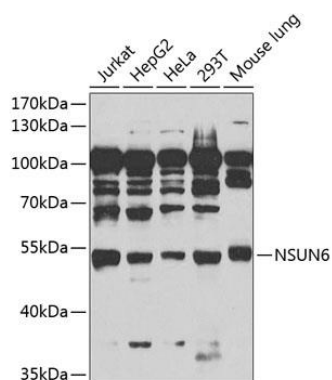
Immunogen:

Recombinant fusion protein containing a sequence corresponding to amino acids 220-469 of human NSUN6 (NP_872349.1).

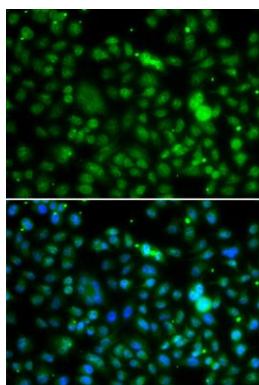
Storage:

Store at -20°C. Avoid freeze / thaw cycles. Buffer: PBS with 0.02% sodium azide, 50% glycerol, pH7.3.

Product Images



Western blot analysis of extracts of various cell lines, using NSUN6 antibody (CAB13454) at 1:1000 dilution. Secondary antibody: HRP Goat Anti-Rabbit IgG (H+L) (CABS014) at 1:10000 dilution. Lysates/proteins: 25ug per lane. Blocking buffer: 3% nonfat dry milk in TBST. Detection: ECL Enhanced Kit (CABM00021). Exposure time: 90s.



Immunofluorescence analysis of MCF-7 cells using NSUN6 antibody (CAB13454). Blue: DAPI for nuclear staining.