

HO-1 Rabbit Polyclonal Antibody



CAB1346

Product Information

Size:

20uL, 50uL, 100uL, 200uL

Observed MW:

32kDa

Calculated MW:

32kDa

Applications:

WB IHC IF

Reactivity:

Human, Mouse, Rat

Protein Background

Heme oxygenase, an essential enzyme in heme catabolism, cleaves heme to form biliverdin, which is subsequently converted to bilirubin by biliverdin reductase, and carbon monoxide, a putative neurotransmitter. Heme oxygenase activity is induced by its substrate heme and by various nonheme substances. Heme oxygenase occurs as 2 isozymes, an inducible heme oxygenase-1 and a constitutive heme oxygenase-2. HMOX1 and HMOX2 belong to the heme oxygenase family.

Immunogen information

Gene ID:

3162

Uniprot

P09601

Synonyms:

HMOX1; HMOX1D; HO-1; HSP32; bK286B10

Antibody Information

Recommended dilutions:

WB 1:500 - 1:2000 IHC 1:50
- 1:200 IF 1:50 - 1:200

Source:

Rabbit

Isotype:

IgG

Purification:

Affinity purification

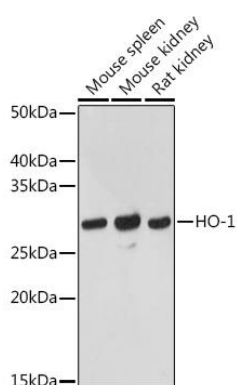
Immunogen:

Recombinant fusion protein containing a sequence corresponding to amino acids 1-288 of human HO-1 (NP_002124.1).

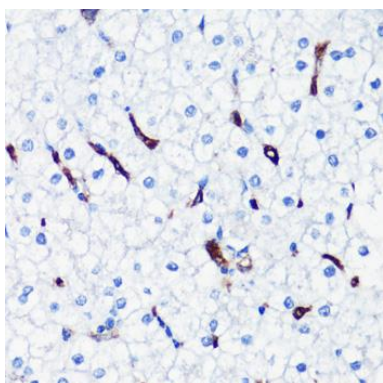
Storage:

Store at -20°C. Avoid freeze / thaw cycles. Buffer: PBS with 0.02% sodium azide, 50% glycerol, pH7.3.

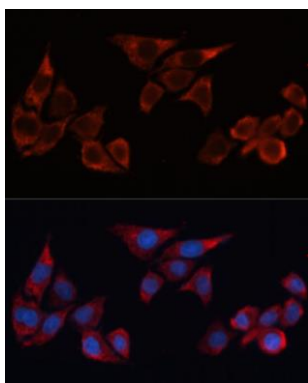
Product Images



Western blot analysis of extracts of various cell lines, using HO-1 antibody (CAB1346) at 1:1000 dilution. Secondary antibody: HRP Goat Anti-Rabbit IgG (H+L) (CABS014) at 1:10000 dilution. Lysates/proteins: 25ug per lane. Blocking buffer: 3% nonfat dry milk in TBST. Detection: ECL Basic Kit (CABM00020). Exposure time: 10s.



Immunohistochemistry of paraffin-embedded human liver using HO-1 antibody (CAB1346) at dilution of 1:200 (40x lens).



Immunofluorescence analysis of HeLa cells using HO-1 Polyclonal Antibody (CAB1346) at dilution of 1:100 (40x lens). Blue: DAPI for nuclear staining.