

AK1 Rabbit Polyclonal Antibody



CAB13460

Product Information

Size:

20uL, 50uL, 100uL, 200uL

Observed MW:

22kDa

Calculated MW:

21kDa

Applications:

WB IHC IF

Reactivity:

Human, Mouse, Rat

Protein Background

This gene encodes an adenylate kinase enzyme involved in energy metabolism and homeostasis of cellular adenine nucleotide ratios in different intracellular compartments. This gene is highly expressed in skeletal muscle, brain and erythrocytes. Certain mutations in this gene resulting in a functionally inadequate enzyme are associated with a rare genetic disorder causing nonspherocytic hemolytic anemia. Alternative splicing of this gene results in multiple transcript variants encoding different isoforms.

Immunogen information

Gene ID:

203

Uniprot

P00568

Synonyms:

AK1; HTL-S-58j

Antibody Information

Recommended dilutions:

WB 1:500 - 1:2000 IHC 1:50
- 1:200 IF 1:50 - 1:200

Source:

Rabbit

Isotype:

IgG

Purification:

Affinity purification

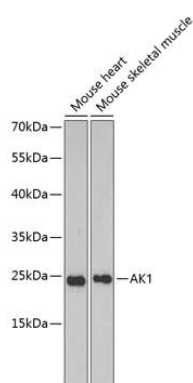
Immunogen:

Recombinant fusion protein containing a sequence corresponding to amino acids 1-194 of human AK1 (NP_000467.1).

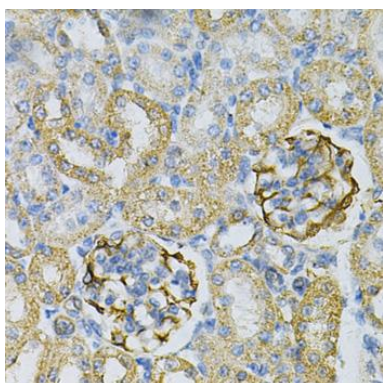
Storage:

Store at -20°C. Avoid freeze / thaw cycles. Buffer: PBS with 0.02% sodium azide, 50% glycerol, pH7.3.

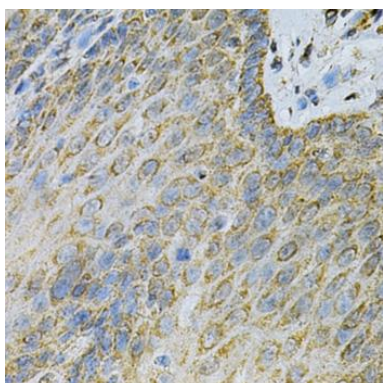
Product Images



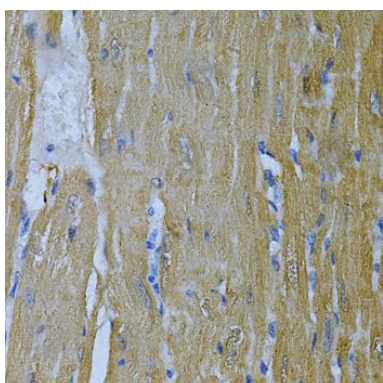
Western blot analysis of extracts of various cell lines, using AK1 antibody (CAB13460) at 1:1000 dilution. Secondary antibody: HRP Goat Anti-Rabbit IgG (H+L) (CABS014) at 1:10000 dilution. Lysates/proteins: 25ug per lane. Blocking buffer: 3% nonfat dry milk in TBST.



Immunohistochemistry of paraffin-embedded rat kidney using AK1 Antibody (CAB13460) at dilution of 1:100 (40x lens).



Immunohistochemistry of paraffin-embedded human esophagus using AK1 Antibody (CAB13460) at dilution of 1:100 (40x lens).



Immunohistochemistry of paraffin-embedded mouse heart using AK1 Antibody (CAB13460) at dilution of 1:100 (40x lens).