

AMPD3 Rabbit Polyclonal Antibody



CAB13464

Product Information

Size:

20uL, 50uL, 100uL, 200uL

Observed MW:

Calculated MW:

24kDa/71kDa/76kDa/88kDa/
89kDa

Applications:

IF

Reactivity:

Human

Antibody Information

Recommended dilutions:

IF 1:50 - 1:200

Source:

Rabbit

Isotype:

IgG

Purification:

Affinity purification

Protein Background

This gene encodes a member of the AMP deaminase gene family. The encoded protein is a highly regulated enzyme that catalyzes the hydrolytic deamination of adenosine monophosphate to inosine monophosphate, a branch point in the adenylate catabolic pathway. This gene encodes the erythrocyte (E) isoforms, whereas other family members encode isoforms that predominate in muscle (M) and liver (L) cells. Mutations in this gene lead to the clinically asymptomatic, autosomal recessive condition erythrocyte AMP deaminase deficiency. Alternatively spliced transcript variants encoding different isoforms of this gene have been described.

Immunogen information

Gene ID:

272

Uniprot

Q01432

Synonyms:

AMPD3

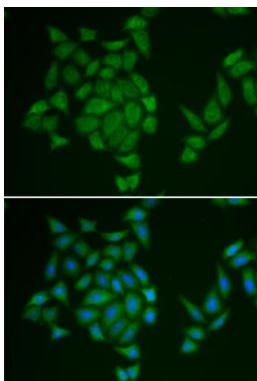
Immunogen:

Recombinant fusion protein containing a sequence corresponding to amino acids 1-260 of human AMPD3 (NP_000471.1).

Storage:

Store at -20°C. Avoid freeze / thaw cycles. Buffer: PBS with 0.02% sodium azide, 50% glycerol, pH7.3.

Product Images



Immunofluorescence analysis of HeLa cells using AMPD3 antibody (CAB13464). Blue: DAPI for nuclear staining.