

# [KO Validated] ARHGDI Rabbit Polyclonal Antibody

## CAB13468



### Product Information

**Size:**

20uL, 50uL, 100uL, 200uL

**Observed MW:**

23kDa

**Calculated MW:**

18kDa/23kDa

**Applications:**

WB IF

**Reactivity:**

Human, Mouse, Rat

### Protein Background

This gene encodes a protein that plays a key role in the regulation of signaling through Rho GTPases. The encoded protein inhibits the disassociation of Rho family members from GDP (guanine diphosphate), thereby maintaining these factors in an inactive state. Activity of this protein is important in a variety of cellular processes, and expression of this gene may be altered in tumors. Mutations in this gene have been found in individuals with nephrotic syndrome, type 8. Alternate splicing results in multiple transcript variants.

### Immunogen information

**Gene ID:**

396

**Uniprot**

P52565

**Synonyms:**

ARHGDI; GDIA1; HEL-S-47e; NPHS8; RHOGDI; RHOGDI-1

### Antibody Information

**Recommended dilutions:**

WB 1:500 - 1:2000 IF 1:50 - 1:200

**Source:**

Rabbit

**Isotype:**

IgG

**Purification:**

Affinity purification

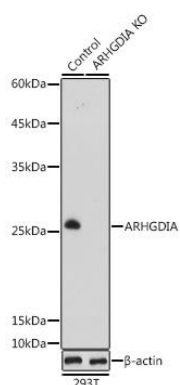
**Immunogen:**

Recombinant fusion protein containing a sequence corresponding to amino acids 1-204 of human ARHGDI (NP\_001172006.1).

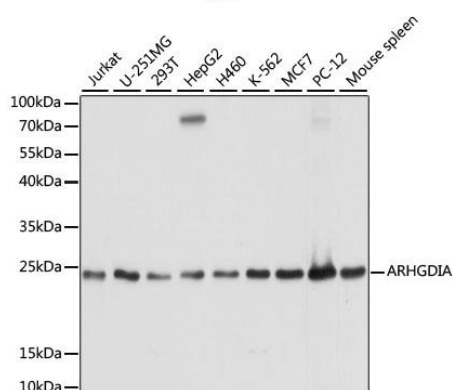
**Storage:**

Store at -20°C. Avoid freeze / thaw cycles. Buffer: PBS with 0.02% sodium azide, 50% glycerol, pH7.3.

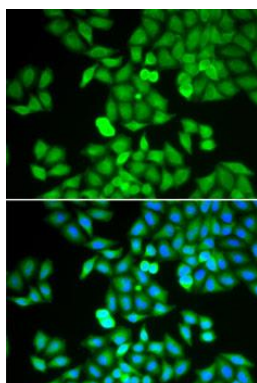
## Product Images



Western blot analysis of extracts from normal (control) and ARHGDI2 knockout (KO) 293T cells, using ARHGDI2 antibody (CAB13468) at 1:1000 dilution. Secondary antibody: HRP Goat Anti-Rabbit IgG (H+L) (CABS014) at 1:10000 dilution. Lysates/proteins: 25ug per lane. Blocking buffer: 3% nonfat dry milk in TBST. Detection: ECL Basic Kit (CABM00020). Exposure time: 5s.



Western blot analysis of extracts of various cell lines, using ARHGDI2 antibody (CAB13468) at 1:1000 dilution. Secondary antibody: HRP Goat Anti-Rabbit IgG (H+L) (CABS014) at 1:10000 dilution. Lysates/proteins: 25ug per lane. Blocking buffer: 3% nonfat dry milk in TBST. Detection: ECL Basic Kit (CABM00020). Exposure time: 3s.



Immunofluorescence analysis of HeLa cells using ARHGDI2 antibody (CAB13468). Blue: DAPI for nuclear staining.