

Bcl-W Rabbit Polyclonal Antibody



CAB13471

Product Information

Size:

20uL, 50uL, 100uL, 200uL

Observed MW:

27kDa

Calculated MW:

20kDa/37kDa

Applications:

WB IHC

Reactivity:

Human, Mouse, Rat

Antibody Information

Recommended dilutions:

WB 1:500 - 1:2000 IHC 1:50
- 1:200

Source:

Rabbit

Isotype:

IgG

Purification:

Affinity purification

Protein Background

This gene encodes a member of the BCL-2 protein family. The proteins of this family form hetero- or homodimers and act as anti- and pro-apoptotic regulators. Expression of this gene in cells has been shown to contribute to reduced cell apoptosis under cytotoxic conditions. Studies of the related gene in mice indicated a role in the survival of NGF- and BDNF-dependent neurons. Mutation and knockout studies of the mouse gene demonstrated an essential role in adult spermatogenesis. Alternative splicing results in multiple transcript variants. Read-through transcription also exists between this gene and the neighboring downstream PABPN1 (poly(A) binding protein, nuclear 1) gene.

Immunogen information

Gene ID:

599

Uniprot

Q92843

Synonyms:

BCL2L2; BCL-W; BCL2-L-2; BCLW; PPP1R51

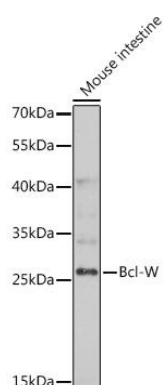
Immunogen:

Recombinant fusion protein containing a sequence corresponding to amino acids 1-193 of human Bcl-W (NP_001186768.1).

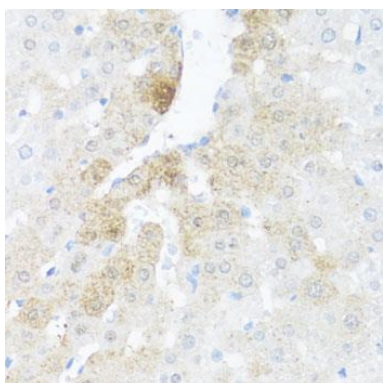
Storage:

Store at -20°C. Avoid freeze / thaw cycles. Buffer: PBS with 0.02% sodium azide, 50% glycerol, pH7.3.

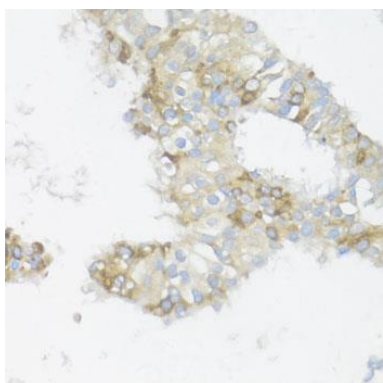
Product Images



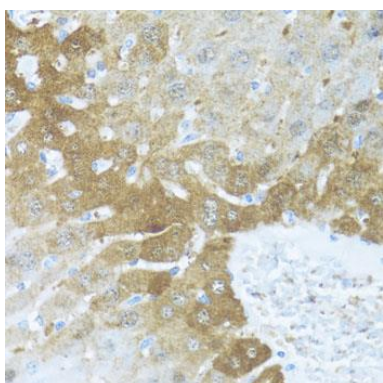
Western blot analysis of extracts of mouse intestine, using Bcl-W antibody (CAB13471) at 1:1000 dilution. Secondary antibody: HRP Goat Anti-Rabbit IgG (H+L) (CABS014) at 1:10000 dilution. Lysates/proteins: 25ug per lane. Blocking buffer: 3% nonfat dry milk in TBST. Detection: ECL Basic Kit (CABM00020). Exposure time: 30s.



Immunohistochemistry of paraffin-embedded rat liver using Bcl-W antibody (CAB13471) at dilution of 1:100 (40x lens).



Immunohistochemistry of paraffin-embedded human mammary cancer using Bcl-W antibody (CAB13471) at dilution of 1:100 (40x lens).



Immunohistochemistry of paraffin-embedded mouse liver using Bcl-W antibody (CAB13471) at dilution of 1:100 (40x lens).