

# SERPINH1 Rabbit Polyclonal Antibody



CAB13474

---

## Product Information

### Size:

20uL, 50uL, 100uL, 200uL

### Observed MW:

46kDa

### Calculated MW:

46kDa

### Applications:

WB IHC IF

### Reactivity:

Human, Mouse

## Antibody Information

### Recommended dilutions:

WB 1:500 - 1:2000 IHC 1:50  
- 1:200 IF 1:50 - 1:200

### Source:

Rabbit

### Isotype:

IgG

### Purification:

Affinity purification

## Protein Background

This gene encodes a member of the serpin superfamily of serine proteinase inhibitors. The encoded protein is localized to the endoplasmic reticulum and plays a role in collagen biosynthesis as a collagen-specific molecular chaperone. Autoantibodies to the encoded protein have been found in patients with rheumatoid arthritis. Expression of this gene may be a marker for cancer, and nucleotide polymorphisms in this gene may be associated with preterm birth caused by preterm premature rupture of membranes. Alternatively spliced transcript variants have been observed for this gene, and a pseudogene of this gene is located on the short arm of chromosome 9.

## Immunogen information

### Gene ID:

871

### Uniprot

P50454

### Synonyms:

SERPINH1; AsTP3; CBP1; CBP2; HSP47; OI10; PIG14; PPROM; RA-A47; SERPINH2; gp46; serpin H1

### Immunogen:

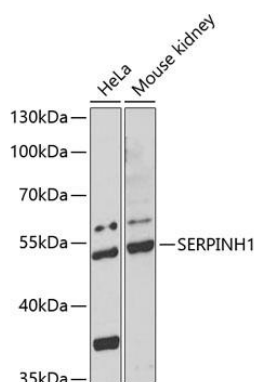
Recombinant fusion protein containing a sequence corresponding to amino acids 139-418 of human SERPINH1 (NP\_001226.2).

### Storage:

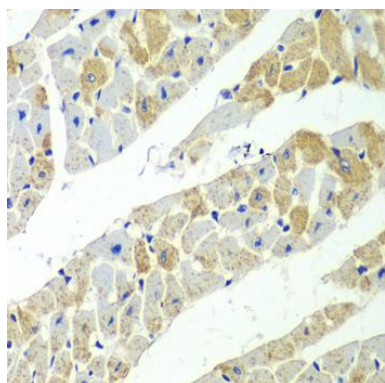
Store at -20°C. Avoid freeze / thaw cycles. Buffer: PBS with 0.02% sodium azide, 50% glycerol, pH7.3.

## Product Images

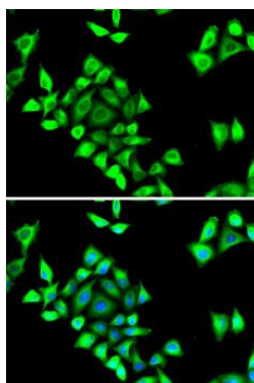
---



Western blot analysis of extracts of various cell lines, using SERPINH1 antibody (CAB13474) at 1:1000 dilution. Secondary antibody: HRP Goat Anti-Rabbit IgG (H+L) (CABS014) at 1:10000 dilution. Lysates/proteins: 25ug per lane. Blocking buffer: 3% nonfat dry milk in TBST. Detection: ECL Basic Kit (CABM00020). Exposure time: 90s.



Immunohistochemistry of paraffin-embedded mouse heart using SERPINH1 antibody (CAB13474) at dilution of 1:100 (40x lens).



Immunofluorescence analysis of HeLa cells using SERPINH1 antibody (CAB13474). Blue: DAPI for nuclear staining.