

# CHD2 Rabbit Polyclonal Antibody



CAB13478

---

## Product Information

### Size:

20uL, 50uL, 100uL, 200uL

### Observed MW:

270kDa

### Calculated MW:

56kDa/200kDa/211kDa

### Applications:

WB

### Reactivity:

Human

## Protein Background

The CHD family of proteins is characterized by the presence of chromo (chromatin organization modifier) domains and SNF2-related helicase/ATPase domains. CHD genes alter gene expression possibly by modification of chromatin structure thus altering access of the transcriptional apparatus to its chromosomal DNA template. Alternatively spliced transcript variants encoding distinct isoforms have been found for this gene.

## Immunogen information

### Gene ID:

1106

### Uniprot

O14647

### Synonyms:

CHD2; EEOC

## Antibody Information

### Recommended dilutions:

WB 1:500 - 1:2000

### Source:

Rabbit

### Isotype:

IgG

### Purification:

Affinity purification

### Immunogen:

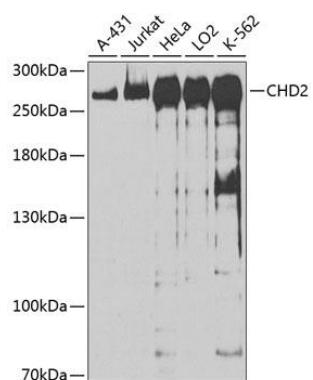
A synthetic peptide corresponding to a sequence within amino acids 1700 to the C-terminus of human CHD2 (NP\_001262.3).

### Storage:

Store at -20°C. Avoid freeze / thaw cycles. Buffer: PBS with 0.02% sodium azide, 50% glycerol, pH7.3.

## Product Images

---



Western blot analysis of extracts of various cell lines, using CHD2 antibody (CAB13478) at 1:1000 dilution. Secondary antibody: HRP Goat Anti-Rabbit IgG (H+L) (CABS014) at 1:10000 dilution. Lysates/proteins: 25ug per lane. Blocking buffer: 3% nonfat dry milk in TBST. Detection: ECL Basic Kit (CABM00020). Exposure time: 90s.