

CTSS Rabbit Polyclonal Antibody



CAB13482

Product Information

Size:

20uL, 50uL, 100uL, 200uL

Observed MW:

Calculated MW:

31kDa/37kDa

Applications:

IHC

Reactivity:

Human

Antibody Information

Recommended dilutions:

IHC 1:50 - 1:200

Source:

Rabbit

Isotype:

IgG

Purification:

Affinity purification

Protein Background

The protein encoded by this gene, a member of the peptidase C1 family, is a lysosomal cysteine proteinase that may participate in the degradation of antigenic proteins to peptides for presentation on MHC class II molecules. The encoded protein can function as an elastase over a broad pH range in alveolar macrophages. Alternatively spliced transcript variants encoding distinct isoforms have been found for this gene.

Immunogen information

Gene ID:

1520

Uniprot

P25774

Synonyms:

CTSS

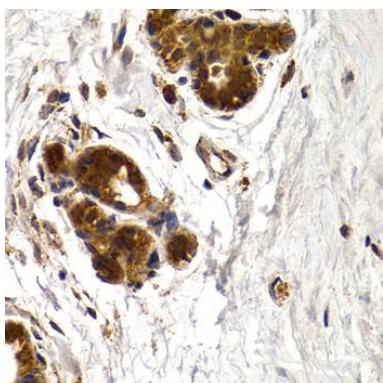
Immunogen:

Recombinant fusion protein containing a sequence corresponding to amino acids 115-331 of human CTSS (NP_004070.3).

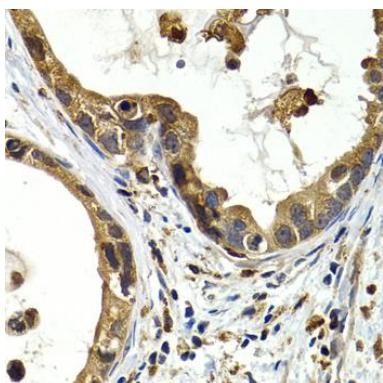
Storage:

Store at -20°C. Avoid freeze / thaw cycles. Buffer: PBS with 0.02% sodium azide, 50% glycerol, pH7.3.

Product Images



Immunohistochemistry of paraffin-embedded human mammary gland using CTSS antibody (CAB13482) at dilution of 1:200 (40x lens).



Immunohistochemistry of paraffin-embedded human gastric cancer using CTSS antibody (CAB13482) at dilution of 1:200 (40x lens).