

FBL Rabbit Polyclonal Antibody



CAB13490

Product Information

Size:

20uL, 50uL, 100uL, 200uL

Observed MW:

37kDa

Calculated MW:

33kDa

Applications:

WB IHC IF IP

Reactivity:

Human, Mouse, Rat, Monkey

Antibody Information

Recommended dilutions:

WB 1:500 - 1:2000 IHC 1:50
- 1:200 IF 1:50 - 1:200 IP
1:20 - 1:50

Source:

Rabbit

Isotype:

IgG

Purification:

Affinity purification

Protein Background

This gene product is a component of a nucleolar small nuclear ribonucleoprotein (snRNP) particle thought to participate in the first step in processing preribosomal RNA. It is associated with the U3, U8, and U13 small nuclear RNAs and is located in the dense fibrillar component (DFC) of the nucleolus. The encoded protein contains an N-terminal repetitive domain that is rich in glycine and arginine residues, like fibrillarins in other species. Its central region resembles an RNA-binding domain and contains an RNP consensus sequence. Antisera from approximately 8% of humans with the autoimmune disease scleroderma recognize fibrillarins.

Immunogen information

Gene ID:

2091

Uniprot

P22087

Synonyms:

FBL; FIB; FLRN; RNU3IP1; Nop1

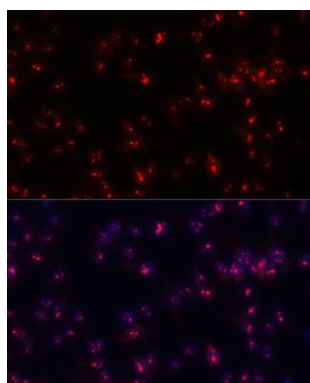
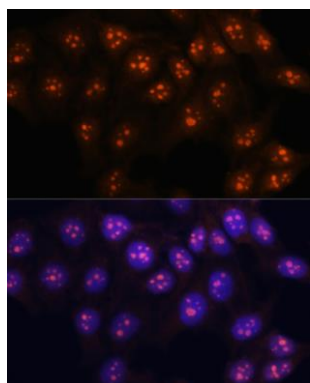
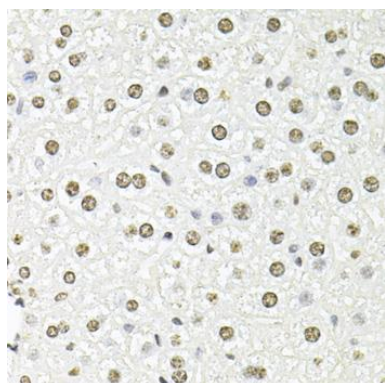
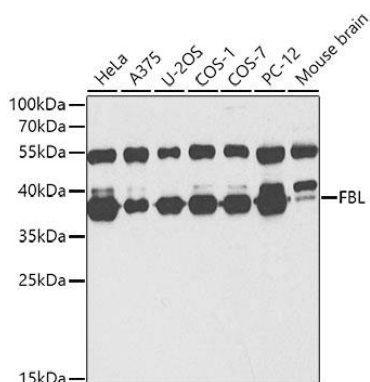
Immunogen:

Recombinant fusion protein containing a sequence corresponding to amino acids 100-321 of human FBL (NP_001427.2).

Storage:

Store at -20°C. Avoid freeze / thaw cycles. Buffer: PBS with 0.02% sodium azide, 50% glycerol, pH7.3.

Product Images



Western blot analysis of extracts of various cell lines, using FBL antibody (CAB13490) at 1:1000 dilution. Secondary antibody: HRP Goat Anti-Rabbit IgG (H+L) (CABS014) at 1:10000 dilution. Lysates/proteins: 25ug per lane. Blocking buffer: 3% nonfat dry milk in TBST.

Immunohistochemistry of paraffin-embedded mouse liver using FBL antibody (CAB13490) at dilution of 1:100 (40x lens).

Immunofluorescence analysis of HeLa cells using FBL antibody (CAB13490) at dilution of 1:100. Blue: DAPI for nuclear staining.

Immunofluorescence analysis of C6 cells using FBL antibody (CAB13490) at dilution of 1:100. Blue: DAPI for nuclear staining.