

# FAH Rabbit Polyclonal Antibody



CAB13492

---

## Product Information

### Size:

20uL, 50uL, 100uL, 200uL

### Observed MW:

46kDa

### Calculated MW:

38kDa/46kDa

### Applications:

WB IHC

### Reactivity:

Human, Mouse, Rat

## Antibody Information

### Recommended dilutions:

WB 1:500 - 1:2000 IHC 1:50  
- 1:200

### Source:

Rabbit

### Isotype:

IgG

### Purification:

Affinity purification

## Protein Background

This gene encodes the last enzyme in the tyrosine catabolism pathway. FAH deficiency is associated with Type 1 hereditary tyrosinemia (HT).

## Immunogen information

### Gene ID:

2184

### Uniprot

P16930

### Synonyms:

FAH

### Immunogen:

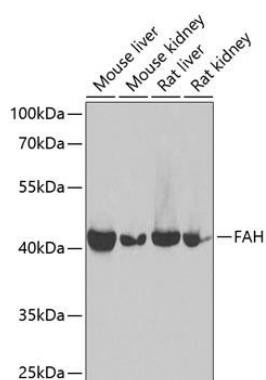
Recombinant fusion protein containing a sequence corresponding to amino acids 1-419 of human FAH (NP\_000128.1).

### Storage:

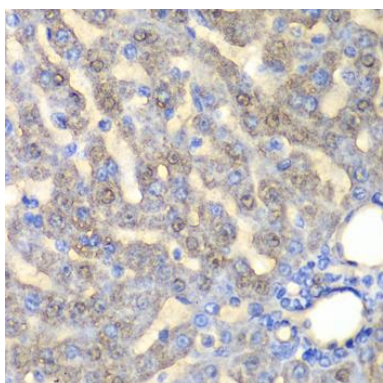
Store at -20°C. Avoid freeze / thaw cycles. Buffer: PBS with 0.02% sodium azide, 50% glycerol, pH7.3.

## Product Images

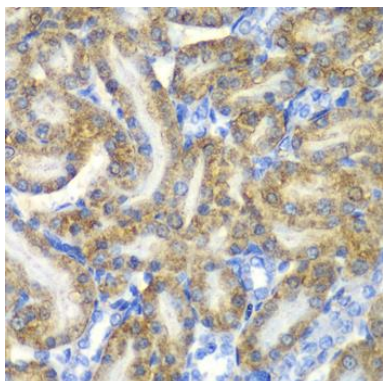
---



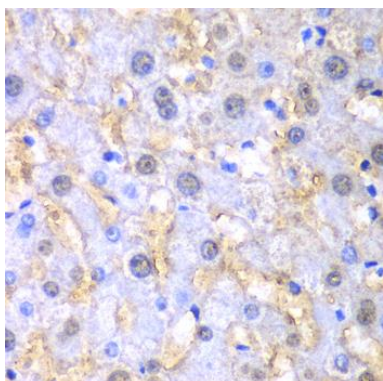
Western blot analysis of extracts of various cell lines, using FAH antibody (CAB13492) at 1:1000 dilution. Secondary antibody: HRP Goat Anti-Rabbit IgG (H+L) (CABS014) at 1:10000 dilution. Lysates/proteins: 25ug per lane. Blocking buffer: 3% nonfat dry milk in TBST. Detection: ECL Basic Kit (CABM00020). Exposure time: 5s.



Immunohistochemistry of paraffin-embedded rat liver using FAH antibody (CAB13492) at dilution of 1:100 (40x lens).



Immunohistochemistry of paraffin-embedded rat kidney using FAH antibody (CAB13492) at dilution of 1:100 (40x lens).



Immunohistochemistry of paraffin-embedded human liver damage using FAH antibody (CAB13492) at dilution of 1:100 (40x lens).