

GTF2F2 Rabbit Polyclonal Antibody



CAB13497

Product Information

Size:

20uL, 50uL, 100uL, 200uL

Observed MW:

28kDa

Calculated MW:

28kDa

Applications:

WB IHC IF

Reactivity:

Human, Mouse

Antibody Information

Recommended dilutions:

WB 1:500 - 1:2000 IHC 1:50
- 1:200 IF 1:50 - 1:200

Source:

Rabbit

Isotype:

IgG

Purification:

Affinity purification

Protein Background

Immunogen information

Gene ID:

2963

Uniprot

P13984

Synonyms:

GTF2F2; BTF4; RAP30; TF2F2; TFIIF

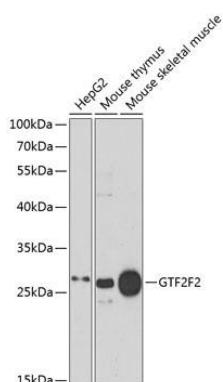
Immunogen:

Recombinant fusion protein containing a sequence corresponding to amino acids 1-249 of human GTF2F2 (NP_004119.1).

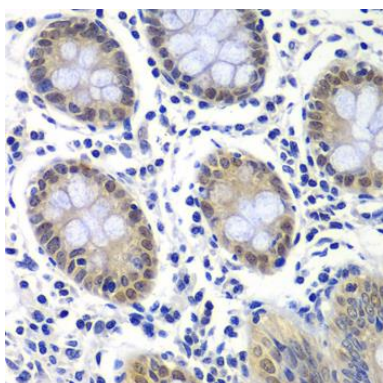
Storage:

Store at -20°C. Avoid freeze / thaw cycles. Buffer: PBS with 0.02% sodium azide, 50% glycerol, pH7.3.

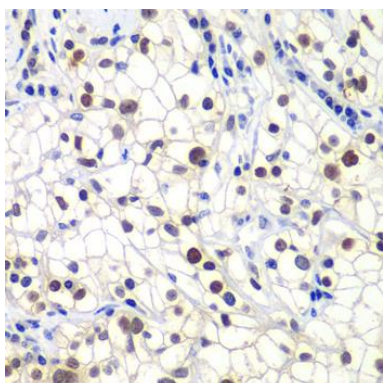
Product Images



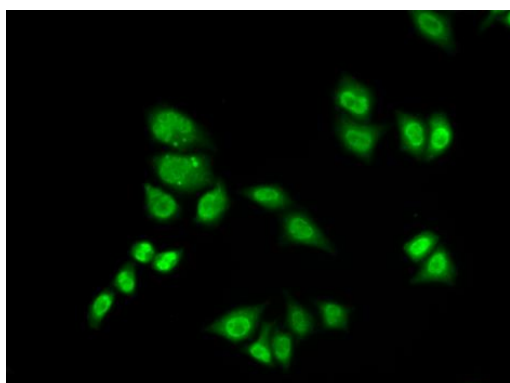
Western blot analysis of extracts of various cell lines, using GTF2F2 antibody (CAB13497) at 1:1000 dilution. Secondary antibody: HRP Goat Anti-Rabbit IgG (H+L) (CABS014) at 1:10000 dilution. Lysates/proteins: 25ug per lane. Blocking buffer: 3% nonfat dry milk in TBST. Detection: ECL Enhanced Kit (CABM00021). Exposure time: 30s.



Immunohistochemistry of paraffin-embedded human colon using GTF2F2 antibody (CAB13497) at dilution of 1:200 (40x lens).



Immunohistochemistry of paraffin-embedded human kidney cancer using GTF2F2 antibody (CAB13497) at dilution of 1:200 (40x lens).



Immunofluorescence analysis of A549 cells using GTF2F2 antibody (CAB13497).