

Hsp90 alpha Rabbit Polyclonal Antibody



CAB13501

Product Information

Size:

20uL, 50uL, 100uL, 200uL

Observed MW:

101kDa

Calculated MW:

84kDa/98kDa

Applications:

WB IP

Reactivity:

Human, Mouse, Rat

Antibody Information

Recommended dilutions:

WB 1:500 - 1:2000 IP 1:20 - 1:50

Source:

Rabbit

Isotype:

IgG

Purification:

Affinity purification

Protein Background

The protein encoded by this gene is an inducible molecular chaperone that functions as a homodimer. The encoded protein aids in the proper folding of specific target proteins by use of an ATPase activity that is modulated by co-chaperones. Two transcript variants encoding different isoforms have been found for this gene.

Immunogen information

Gene ID:

3320

Uniprot

P07900

Synonyms:

HSP90AA1; EL52; HEL-S-65p; HSP86; HSP89A; HSP90A; HSP90N; HSPC1; HSPCA; HSPCAL1; HSPCAL4; HSPN; Hsp103; Hsp89; Hsp90; LAP-2; LAP2

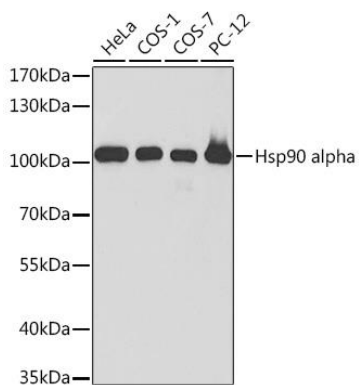
Immunogen:

Recombinant fusion protein containing a sequence corresponding to amino acids 433-732 of human Hsp90 alpha (NP_005339.3).

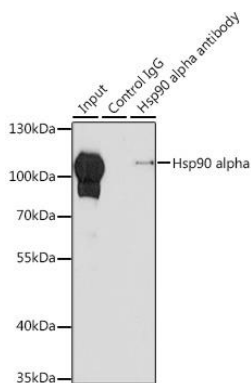
Storage:

Store at -20°C. Avoid freeze / thaw cycles. Buffer: PBS with 0.02% sodium azide, 50% glycerol, pH7.3.

Product Images



Western blot analysis of extracts of various cell lines, using HSP90AA1 antibody (CAB13501) at 1:500 dilution. Secondary antibody: HRP Goat Anti-Rabbit IgG (H+L) (CABS014) at 1:10000 dilution. Lysates/proteins: 25ug per lane. Blocking buffer: 3% nonfat dry milk in TBST.



Immunoprecipitation analysis of 200ug extracts of HeLa cells using 1ug HSP90AA1 antibody (CAB13501). Western blot was performed from the immunoprecipitate using HSP90AA1 antibody (CAB13501) at a dilution of 1:500.