

# CD127/IL7R Rabbit Polyclonal Antibody



CAB13502

## Product Information

### Size:

20uL, 50uL, 100uL, 200uL

### Observed MW:

72KDa

### Calculated MW:

65-90kDa

### Applications:

WB IP

### Reactivity:

Human, Mouse

## Antibody Information

### Recommended dilutions:

WB 1:500 - 1:2000 IP 1:50 - 1:100

### Source:

Rabbit

### Isotype:

IgG

### Purification:

Affinity purification

## Protein Background

The protein encoded by this gene is a receptor for interleukin 7 (IL7). The function of this receptor requires the interleukin 2 receptor, gamma chain (IL2RG), which is a common gamma chain shared by the receptors of various cytokines, including interleukins 2, 4, 7, 9, and 15. This protein has been shown to play a critical role in V(D)J recombination during lymphocyte development. Defects in this gene may be associated with severe combined immunodeficiency (SCID). Alternatively spliced transcript variants have been found.

## Immunogen information

### Gene ID:

3575

### Uniprot

P16871

### Synonyms:

IL7R; CD127; CDW127; IL-7R-alpha; IL7RA; ILRA

### Immunogen:

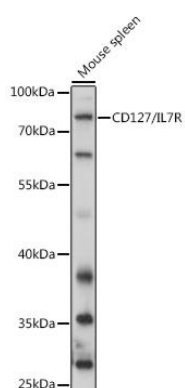
Recombinant fusion protein containing a sequence corresponding to amino acids 21-239 of human CD127/IL7R (NP\_002176.2).

### Storage:

Store at -20°C. Avoid freeze / thaw cycles. Buffer: PBS with 0.02% sodium azide, 50% glycerol, pH7.3.

## Product Images

---



Western blot analysis of extracts of Mouse spleen, using CD127/IL7R antibody (CAB13502) at 1:1000 dilution. Secondary antibody: HRP Goat Anti-Rabbit IgG (H+L) (CABS014) at 1:10000 dilution. Lysates/proteins: 25ug per lane. Blocking buffer: 3% nonfat dry milk in TBST. Detection: ECL Basic Kit (CABM00020). Exposure time: 5s.