

LRP1 Rabbit Polyclonal Antibody



CAB13509

Product Information

Size:

20uL, 50uL, 100uL, 200uL

Observed MW:

85kDa

Calculated MW:

31kDa/504kDa

Applications:

WB IF

Reactivity:

Human, Mouse

Antibody Information

Recommended dilutions:

WB 1:500 - 1:2000 IF 1:50 - 1:200

Source:

Rabbit

Isotype:

IgG

Purification:

Affinity purification

Protein Background

This gene encodes a member of the low-density lipoprotein receptor family of proteins. The encoded preproprotein is proteolytically processed by furin to generate 515 kDa and 85 kDa subunits that form the mature receptor (PMID: 8546712). This receptor is involved in several cellular processes, including intracellular signaling, lipid homeostasis, and clearance of apoptotic cells. In addition, the encoded protein is necessary for the alpha 2-macroglobulin-mediated clearance of secreted amyloid precursor protein and beta-amyloid, the main component of amyloid plaques found in Alzheimer patients. Expression of this gene decreases with age and has been found to be lower than controls in brain tissue from Alzheimer's disease patients.

Immunogen information

Gene ID:

4035

Uniprot

Q07954

Synonyms:

LRP1; A2MR; APOER; APR; CD91; IGFBP3R; KPA; LRP; LRP1A; TGFBR5

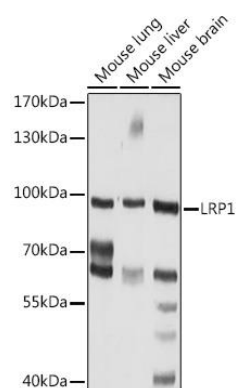
Immunogen:

Recombinant fusion protein containing a sequence corresponding to amino acids 20-270 of human LRP1 (NP_002323.2).

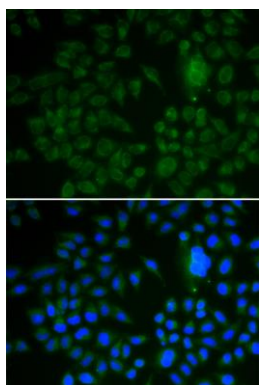
Storage:

Store at -20°C. Avoid freeze / thaw cycles. Buffer: PBS with 0.02% sodium azide, 50% glycerol, pH7.3.

Product Images



Western blot analysis of extracts of various cell lines, using LRP1 Rabbit pAb (CAB13509) at 1:1000 dilution. Secondary antibody: HRP Goat Anti-Rabbit IgG (H+L) (CABS014) at 1:10000 dilution. Lysates/proteins: 25ug per lane. Blocking buffer: 3% nonfat dry milk in TBST. Detection: ECL Enhanced Kit (CABM00021). Exposure time: 60s.



Immunofluorescence analysis of U2OS cells using LRP1 antibody (CAB13509). Blue: DAPI for nuclear staining.