

# LYZ Rabbit Polyclonal Antibody



CAB13511

---

## Product Information

### Size:

20uL, 50uL, 100uL, 200uL

### Observed MW:

13kDa

### Calculated MW:

16kDa

### Applications:

WB IHC IF

### Reactivity:

Human, Mouse

## Antibody Information

### Recommended dilutions:

WB 1:500 - 1:2000 IHC 1:50  
- 1:200 IF 1:50 - 1:200

### Source:

Rabbit

### Isotype:

IgG

### Purification:

Affinity purification

## Protein Background

This gene encodes human lysozyme, whose natural substrate is the bacterial cell wall peptidoglycan (cleaving the beta[1-4]glycosidic linkages between N-acetylmuramic acid and N-acetylglucosamine). Lysozyme is one of the antimicrobial agents found in human milk, and is also present in spleen, lung, kidney, white blood cells, plasma, saliva, and tears. The protein has antibacterial activity against a number of bacterial species. Missense mutations in this gene have been identified in heritable renal amyloidosis.

## Immunogen information

### Gene ID:

4069

### Uniprot

P61626

### Synonyms:

LYZ; LYZF1; LZM; lysozyme

### Immunogen:

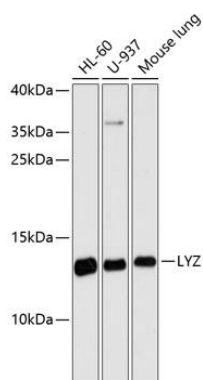
A synthetic peptide corresponding to a sequence within amino acids 1-100 of human LYZ (NP\_000230.1).

### Storage:

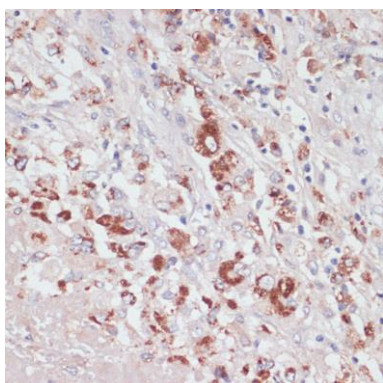
Store at -20°C. Avoid freeze / thaw cycles. Buffer: PBS with 0.02% sodium azide, 50% glycerol, pH7.3.

## Product Images

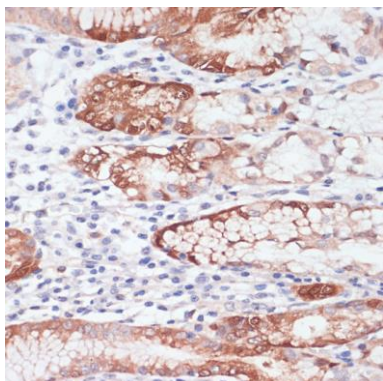
---



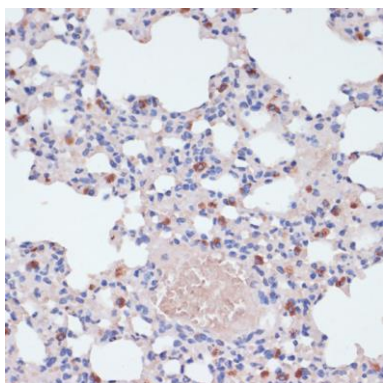
Western blot analysis of extracts of various cell lines, using LYZ antibody (CAB13511) at 1:3000 dilution. Secondary antibody: HRP Goat Anti-Rabbit IgG (H+L) (CABS014) at 1:10000 dilution. Lysates/proteins: 25ug per lane. Blocking buffer: 3% nonfat dry milk in TBST. Detection: ECL Basic Kit (CABM00020). Exposure time: 90s.



Immunohistochemistry of paraffin-embedded human liver cancer using LYZ antibody (CAB13511) at dilution of 1:100 (40x lens).



Immunohistochemistry of paraffin-embedded human stomach using LYZ antibody (CAB13511) at dilution of 1:100 (40x lens).



Immunohistochemistry of paraffin-embedded mouse lung using LYZ antibody (CAB13511) at dilution of 1:100 (40x lens).