

HSPB8/HSP22 Rabbit Monoclonal Antibody



CAB13518

Product Information

Size:

20uL, 50uL, 100uL, 200uL

Observed MW:

22kDa

Calculated MW:

22kDa

Applications:

WB IF

Reactivity:

Human, Mouse, Rat

Antibody Information

Recommended dilutions:

WB 1:500 - 1:2000 IF 1:50 - 1:200

Source:

Rabbit

Isotype:

IgG

Purification:

Affinity purification

Protein Background

The protein encoded by this gene belongs to the superfamily of small heat-shock proteins containing a conservative alpha-crystallin domain at the C-terminal part of the molecule. The expression of this gene is induced by estrogen in estrogen receptor-positive breast cancer cells, and this protein also functions as a chaperone in association with Bag3, a stimulator of macroautophagy. Thus, this gene appears to be involved in regulation of cell proliferation, apoptosis, and carcinogenesis, and mutations in this gene have been associated with different neuromuscular diseases, including Charcot-Marie-Tooth disease. [provided by RefSeq, Jul 2008]

Immunogen information

Gene ID:

26353

Uniprot

Q9UJY1

Synonyms:

CMT2L; DHMN2; E2IG1; H11; HMN2; HMN2A; HSP22

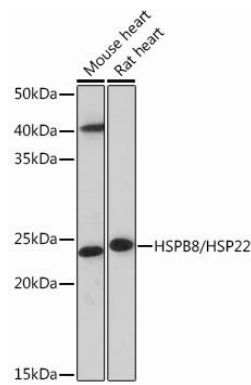
Immunogen:

A synthesized peptide derived from human HSPB8/HSP22

Storage:

Store at -20°C. Avoid freeze / thaw cycles. Buffer: PBS with 0.02% sodium azide, 0.05% BSA, 50% glycerol, pH7.3.

Product Images



Western blot - HSPB8/HSP22 Rabbit mAb (CAB13518)