

NOTCH3 Rabbit Polyclonal Antibody



CAB13522

Product Information

Size:

20uL, 50uL, 100uL, 200uL

Observed MW:

280kDa

Calculated MW:

243kDa

Applications:

WB IHC

Reactivity:

Human, Mouse, Rat

Antibody Information

Recommended dilutions:

WB 1:500 - 1:2000 IHC 1:50
- 1:200

Source:

Rabbit

Isotype:

IgG

Purification:

Affinity purification

Protein Background

This gene encodes the third discovered human homologue of the *Drosophila melanogaster* type I membrane protein notch. In *Drosophila*, notch interaction with its cell-bound ligands (delta, serrate) establishes an intercellular signalling pathway that plays a key role in neural development. Homologues of the notch-ligands have also been identified in human, but precise interactions between these ligands and the human notch homologues remains to be determined. Mutations in NOTCH3 have been identified as the underlying cause of cerebral autosomal dominant arteriopathy with subcortical infarcts and leukoencephalopathy (CADASIL).

Immunogen information

Gene ID:

4854

Uniprot

Q9UM47

Synonyms:

NOTCH3; CADASIL; CADASIL1; CASIL; IMF2; LMNS; notch 3

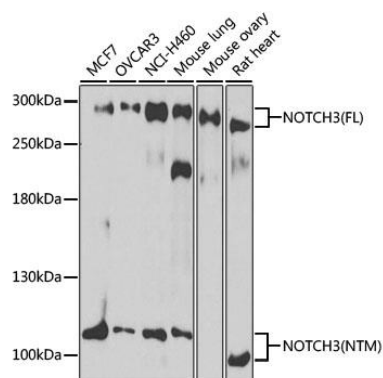
Immunogen:

A synthetic peptide corresponding to a sequence within amino acids 2200 to the C-terminus of human NOTCH3 (NP_000426.2).

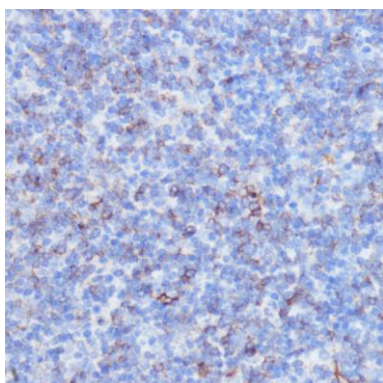
Storage:

Store at -20°C. Avoid freeze / thaw cycles. Buffer: PBS with 0.02% sodium azide, 50% glycerol, pH7.3.

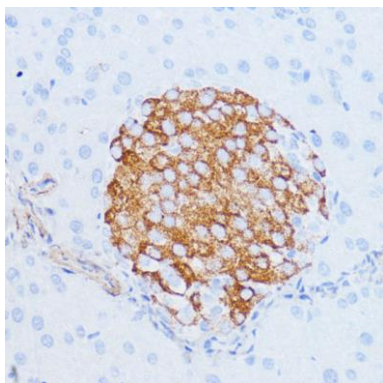
Product Images



Western blot analysis of extracts of various cell lines, using NOTCH3 antibody (CAB13522) at 1:1000 dilution. Secondary antibody: HRP Goat Anti-Rabbit IgG (H+L) (CABS014) at 1:10000 dilution. Lysates/proteins: 25ug per lane. Blocking buffer: 3% nonfat dry milk in TBST. Detection: ECL Basic Kit (CABM00020). Exposure time: 5s.



Immunohistochemistry of paraffin-embedded mouse spleen using NOTCH3 antibody (CAB13522) at dilution of 1:100 (40x lens).



Immunohistochemistry of paraffin-embedded mouse pancreas using NOTCH3 antibody (CAB13522) at dilution of 1:100 (40x lens).