

VWF Rabbit Monoclonal Antibody



CAB13523

Product Information

Size:

20uL, 50uL, 100uL, 200uL

Observed MW:

309KDa

Calculated MW:

309kDa

Applications:

WB IHC

Reactivity:

Human, Mouse

Protein Background

This gene encodes a glycoprotein involved in hemostasis. The encoded preproprotein is proteolytically processed following assembly into large multimeric complexes. These complexes function in the adhesion of platelets to sites of vascular injury and the transport of various proteins in the blood. Mutations in this gene result in von Willebrand disease, an inherited bleeding disorder. An unprocessed pseudogene has been found on chromosome 22. [provided by RefSeq, Oct 2015]

Immunogen information

Gene ID:

7450

Uniprot

P04275

Synonyms:

F8VWF; VWD

Antibody Information

Recommended dilutions:

WB 1:500 - 1:2000 IHC
1:50 - 1:200

Source:

Rabbit

Isotype:

IgG

Purification:

Affinity purification

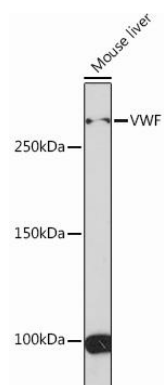
Immunogen:

A synthesized peptide derived from human VWF

Storage:

Store at -20°C. Avoid freeze / thaw cycles. Buffer: PBS with 0.02% sodium azide, 0.05% BSA, 50% glycerol, pH7.3.

Product Images



Western blot - VWF Rabbit mAb (CAB13523)