

PDHA1 Rabbit Polyclonal Antibody



CAB13525

Product Information

Size:

20uL, 50uL, 100uL, 200uL

Observed MW:

Calculated MW:

40kDa/43kDa/44kDa/47kDa

Applications:

IHC IF

Reactivity:

Human, Mouse, Rat

Antibody Information

Recommended dilutions:

IHC 1:50 - 1:200 IF 1:50 - 1:200

Source:

Rabbit

Isotype:

IgG

Purification:

Affinity purification

Protein Background

The pyruvate dehydrogenase (PDH) complex is a nuclear-encoded mitochondrial multienzyme complex that catalyzes the overall conversion of pyruvate to acetyl-CoA and CO₂, and provides the primary link between glycolysis and the tricarboxylic acid (TCA) cycle. The PDH complex is composed of multiple copies of three enzymatic components: pyruvate dehydrogenase (E1), dihydrolipoamide acetyltransferase (E2) and lipoamide dehydrogenase (E3). The E1 enzyme is a heterotetramer of two alpha and two beta subunits. This gene encodes the E1 alpha 1 subunit containing the E1 active site, and plays a key role in the function of the PDH complex. Mutations in this gene are associated with pyruvate dehydrogenase E1-alpha deficiency and X-linked Leigh syndrome. Alternatively spliced transcript variants encoding different isoforms have been found for this gene.

Immunogen information

Gene ID:

5160

Uniprot

P08559

Synonyms:

PDHA1; PDHA; PDHAD; PDHCE1A; PHE1A

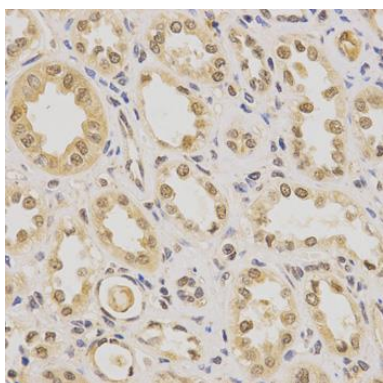
Immunogen:

Recombinant fusion protein containing a sequence corresponding to amino acids 30-390 of human PDHA1 (NP_000275.1).

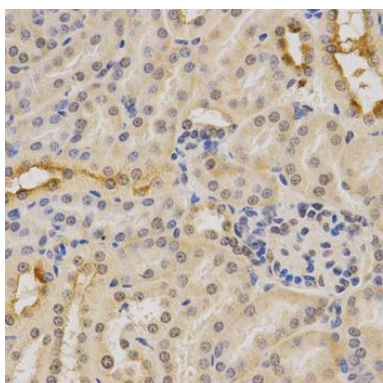
Storage:

Store at -20°C. Avoid freeze / thaw cycles. Buffer: PBS with 0.02% sodium azide, 50% glycerol, pH7.3.

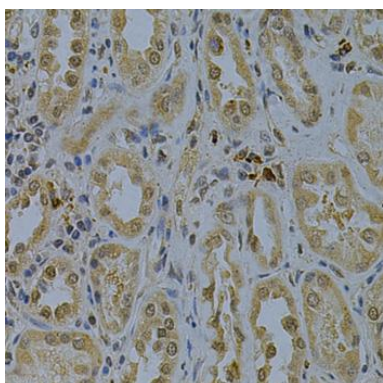
Product Images



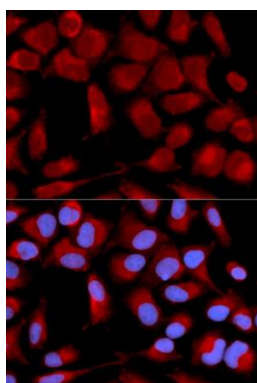
Immunohistochemistry of paraffin-embedded human kidney using PDHA1 Antibody (CAB13525) at dilution of 1:200 (40x lens).



Immunohistochemistry of paraffin-embedded mouse kidney using PDHA1 Antibody (CAB13525) at dilution of 1:200 (40x lens).



Immunohistochemistry of paraffin-embedded human kidney cancer using PDHA1 Antibody (CAB13525) at dilution of 1:200 (40x lens).



Immunofluorescence analysis of U2OS cells using PDHA1 antibody (CAB13525). Blue: DAPI for nuclear staining.