

PHB Rabbit Polyclonal Antibody



CAB13526

Product Information

Size:

20uL, 50uL, 100uL, 200uL

Observed MW:

30kDa

Calculated MW:

17kDa/29kDa

Applications:

WB IF

Reactivity:

Human, Mouse, Rat, Monkey

Antibody Information

Recommended dilutions:

WB 1:500 - 1:2000 IF 1:50 - 1:200

Source:

Rabbit

Isotype:

IgG

Purification:

Affinity purification

Protein Background

This gene is evolutionarily conserved, and its product is proposed to play a role in human cellular senescence and tumor suppression. Antiproliferative activity is reported to be localized to the 3' UTR, which is proposed to function as a trans-acting regulatory RNA. Several pseudogenes of this gene have been identified. Alternative splicing results in multiple transcript variants.

Immunogen information

Gene ID:

5245

Uniprot

P35232

Synonyms:

HEL-215; HEL-S-54e; PHB1; PHB; Prohibitin

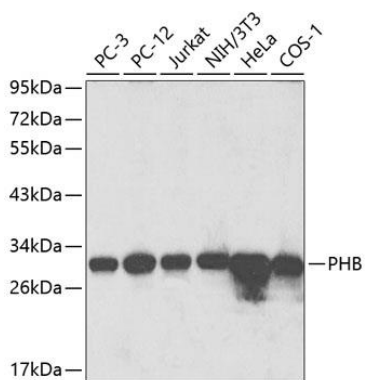
Immunogen:

Recombinant fusion protein containing a sequence corresponding to amino acids 73-272 of human PHB (NP_002625.1).

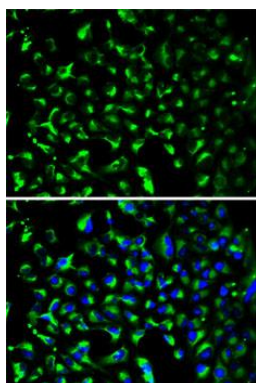
Storage:

Store at -20°C. Avoid freeze / thaw cycles. Buffer: PBS with 0.02% sodium azide, 50% glycerol, pH7.3.

Product Images



Western blot analysis of extracts of various cell lines, using PHB antibody (CAB13526) at 1:1000 dilution. Secondary antibody: HRP Goat Anti-Rabbit IgG (H+L) (CABS014) at 1:10000 dilution. Lysates/proteins: 25ug per lane. Blocking buffer: 3% nonfat dry milk in TBST.



Immunofluorescence analysis of HeLa cells using PHB antibody (CAB13526). Blue: DAPI for nuclear staining.