

POU2F1 Rabbit Polyclonal Antibody



CAB13527

Product Information

Size:

20uL, 50uL, 100uL, 200uL

Observed MW:

90kDa

Calculated MW:

68kDa/72kDa/76kDa/77kDa/
78kDa

Applications:

WB IHC

Reactivity:

Human, Mouse, Rat

Antibody Information

Recommended dilutions:

WB 1:500 - 1:2000 IHC 1:50
- 1:200

Source:

Rabbit

Isotype:

IgG

Purification:

Affinity purification

Protein Background

Immunogen information

Gene ID:

5451

Uniprot

P14859

Synonyms:

POU2F1; OCT1; OTF1; oct-1B

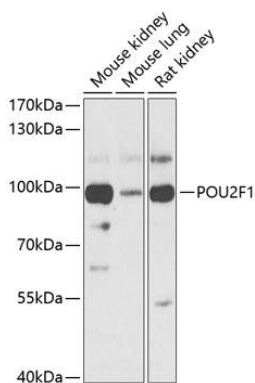
Immunogen:

Recombinant fusion protein containing a sequence corresponding to amino acids 15-290 of human POU2F1 (NP_001185712.1).

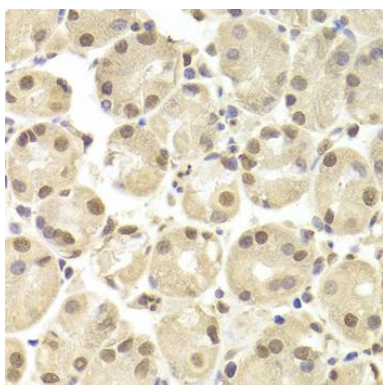
Storage:

Store at -20°C. Avoid freeze / thaw cycles. Buffer: PBS with 0.02% sodium azide, 50% glycerol, pH7.3.

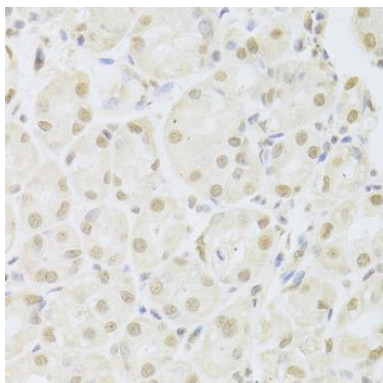
Product Images



Western blot analysis of extracts of various cell lines, using POU2F1 antibody (CAB13527) at 1:1000 dilution. Secondary antibody: HRP Goat Anti-Rabbit IgG (H+L) (CABS014) at 1:10000 dilution. Lysates/proteins: 25ug per lane. Blocking buffer: 3% nonfat dry milk in TBST. Detection: ECL Basic Kit (CABM00020). Exposure time: 15s.



Immunohistochemistry of paraffin-embedded human stomach using POU2F1 Antibody (CAB13527) at dilution of 1:100 (40x lens).



Immunohistochemistry of paraffin-embedded human stomach using POU2F1 Antibody (CAB13527) at dilution of 1:100 (40x lens).