

# PPP1CB Rabbit Polyclonal Antibody



CAB13529

## Product Information

### Size:

20uL, 50uL, 100uL, 200uL

### Observed MW:

37kDa

### Calculated MW:

37kDa

### Applications:

WB IHC IF

### Reactivity:

Human

## Protein Background

The protein encoded by this gene is one of the three catalytic subunits of protein phosphatase 1 (PP1). PP1 is a serine/threonine specific protein phosphatase known to be involved in the regulation of a variety of cellular processes, such as cell division, glycogen metabolism, muscle contractility, protein synthesis, and HIV-1 viral transcription. Mouse studies suggest that PP1 functions as a suppressor of learning and memory. Two alternatively spliced transcript variants encoding distinct isoforms have been observed.

## Immunogen information

### Gene ID:

5500

### Uniprot

P62140

### Synonyms:

PPP1CB; HEL-S-80p; PP-1B; PP1B; PP1beta; PPP1CD; NSLH2

## Antibody Information

### Recommended dilutions:

WB 1:500 - 1:2000 IHC 1:50  
- 1:200 IF 1:50 - 1:200

### Source:

Rabbit

### Isotype:

IgG

### Purification:

Affinity purification

### Immunogen:

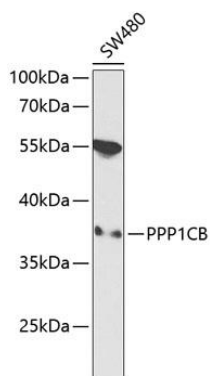
Recombinant fusion protein containing a sequence corresponding to amino acids 1-327 of human PPP1CB (NP\_002700.1).

### Storage:

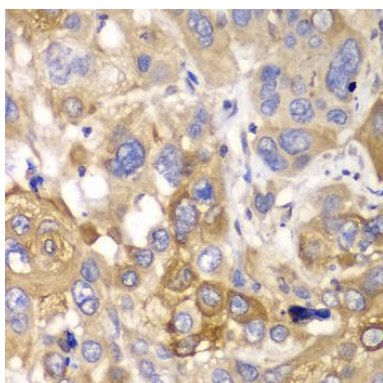
Store at -20°C. Avoid freeze / thaw cycles. Buffer: PBS with 0.02% sodium azide, 50% glycerol, pH7.3.

## Product Images

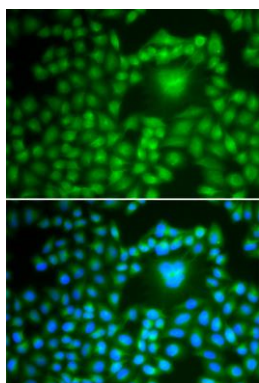
---



Western blot analysis of extracts of SW480 cells, using PPP1CB antibody (CAB13529) at 1:1000 dilution. Secondary antibody: HRP Goat Anti-Rabbit IgG (H+L) (CABS014) at 1:10000 dilution. Lysates/proteins: 25ug per lane. Blocking buffer: 3% nonfat dry milk in TBST.



Immunohistochemistry of paraffin-embedded human esophageal cancer using PPP1CB antibody (CAB13529) at dilution of 1:100 (40x lens).



Immunofluorescence analysis of U2OS cells using PPP1CB antibody (CAB13529). Blue: DAPI for nuclear staining.