

# UPF1 Rabbit Polyclonal Antibody



CAB13541

---

## Product Information

### Size:

20uL, 50uL, 100uL, 200uL

### Observed MW:

135kDa

### Calculated MW:

123kDa/124kDa

### Applications:

WB IHC

### Reactivity:

Human, Mouse

## Antibody Information

### Recommended dilutions:

WB 1:500 - 1:2000 IHC 1:50  
- 1:200

### Source:

Rabbit

### Isotype:

IgG

### Purification:

Affinity purification

## Protein Background

This gene encodes a protein that is part of a post-splicing multiprotein complex involved in both mRNA nuclear export and mRNA surveillance. mRNA surveillance detects exported mRNAs with truncated open reading frames and initiates nonsense-mediated mRNA decay (NMD). When translation ends upstream from the last exon-exon junction, this triggers NMD to degrade mRNAs containing premature stop codons. This protein is located only in the cytoplasm. When translation ends, it interacts with the protein that is a functional homolog of yeast Upf2p to trigger mRNA decapping. Use of multiple polyadenylation sites has been noted for this gene. Alternative splicing results in multiple transcript variants.

## Immunogen information

### Gene ID:

5976

### Uniprot

Q92900

### Synonyms:

UPF1; HUPF1; NORF1; RENT1; pNORF1; smg-2

### Immunogen:

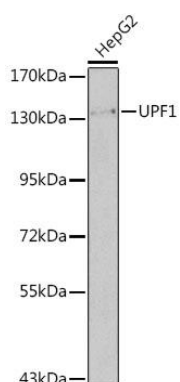
A synthetic peptide corresponding to a sequence within amino acids 270-370 of human UPF1 (NP\_002902.2).

### Storage:

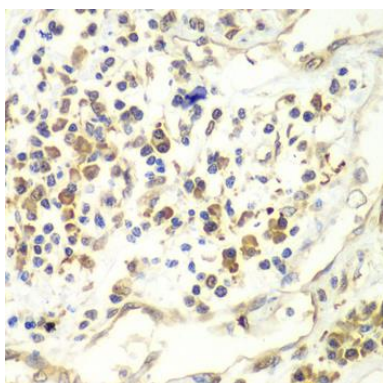
Store at -20°C. Avoid freeze / thaw cycles. Buffer: PBS with 0.02% sodium azide, 50% glycerol, pH7.3.

## Product Images

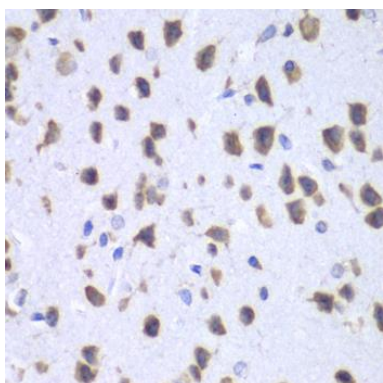
---



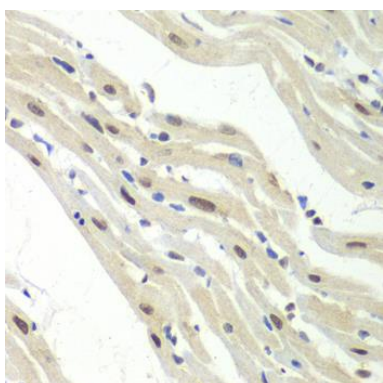
Western blot analysis of extracts of HepG2 cells, using UPF1 antibody (CAB13541) at 1:500 dilution. Secondary antibody: HRP Goat Anti-Rabbit IgG (H+L) (CABS014) at 1:10000 dilution. Lysates/proteins: 25ug per lane. Blocking buffer: 3% nonfat dry milk in TBST. Detection: ECL Basic Kit (CABM00020).



Immunohistochemistry of paraffin-embedded human liver cancer using UPF1 antibody (CAB13541) at dilution of 1:100 (40x lens).



Immunohistochemistry of paraffin-embedded mouse brain using UPF1 antibody (CAB13541) at dilution of 1:100 (40x lens).



Immunohistochemistry of paraffin-embedded mouse heart using UPF1 antibody (CAB13541) at dilution of 1:100 (40x lens).