

SPINK1 Rabbit Polyclonal Antibody



CAB13546

Product Information

Size:

20uL, 50uL, 100uL, 200uL

Observed MW:

Calculated MW:

8kDa

Applications:

IF

Reactivity:

Human

Antibody Information

Recommended dilutions:

IF 1:50 - 1:200

Source:

Rabbit

Isotype:

IgG

Purification:

Affinity purification

Protein Background

The protein encoded by this gene is a trypsin inhibitor, which is secreted from pancreatic acinar cells into pancreatic juice. It is thought to function in the prevention of trypsin-catalyzed premature activation of zymogens within the pancreas and the pancreatic duct. Mutations in this gene are associated with hereditary pancreatitis and tropical calcific pancreatitis.

Immunogen information

Gene ID:

6690

Uniprot

P00995

Synonyms:

SPINK1; PCTT; PSTI; Spink3; TATI; TCP

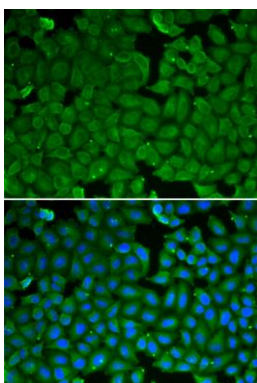
Immunogen:

Recombinant fusion protein containing a sequence corresponding to amino acids 24-79 of human SPINK1 (NP_003113.2).

Storage:

Store at -20°C. Avoid freeze / thaw cycles. Buffer: PBS with 0.02% sodium azide, 50% glycerol, pH7.3.

Product Images



Immunofluorescence analysis of HeLa cells using SPINK1 antibody (CAB13546). Blue: DAPI for nuclear staining.