

TRIM21 Rabbit Polyclonal Antibody



CAB13547

Product Information

Size:

20uL, 50uL, 100uL, 200uL

Observed MW:

54kDa

Calculated MW:

45kDa/54kDa

Applications:

WB IHC IF IP

Reactivity:

Human, Mouse, Rat

Protein Background

This gene encodes a member of the tripartite motif (TRIM) family. The TRIM motif includes three zinc-binding domains, a RING, a B-box type 1 and a B-box type 2, and a coiled-coil region. The encoded protein is part of the RoSSA ribonucleoprotein, which includes a single polypeptide and one of four small RNA molecules. The RoSSA particle localizes to both the cytoplasm and the nucleus. RoSSA interacts with autoantigens in patients with Sjogren syndrome and systemic lupus erythematosus. Alternatively spliced transcript variants for this gene have been described but the full-length nature of only one has been determined.

Immunogen information

Gene ID:

6737

Uniprot

P19474

Synonyms:

TRIM21; RNF81; RO52; Ro/SSA; SSA; SSA1

Antibody Information

Recommended dilutions:

WB 1:500 - 1:2000 IHC 1:50
- 1:200 IF 1:50 - 1:200 IP
1:20 - 1:50

Source:

Rabbit

Isotype:

IgG

Immunogen:

Recombinant fusion protein containing a sequence corresponding to amino acids 80-330 of human TRIM21 (NP_003132.2).

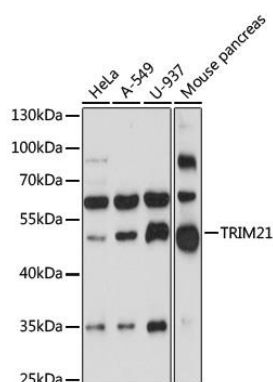
Storage:

Store at -20°C. Avoid freeze / thaw cycles. Buffer: PBS with 0.02% sodium azide, 50% glycerol, pH7.3.

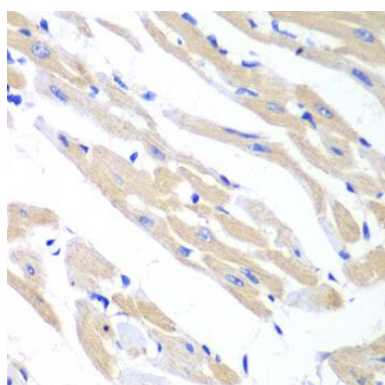
Purification:

Affinity purification

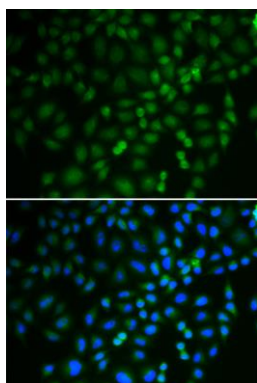
Product Images



Western blot analysis of extracts of various cell lines, using TRIM21 antibody (CAB13547) at 1:1000 dilution. Secondary antibody: HRP Goat Anti-Rabbit IgG (H+L) (CABS014) at 1:10000 dilution. Lysates/proteins: 25ug per lane. Blocking buffer: 3% nonfat dry milk in TBST. Detection: ECL Basic Kit (CABM00020). Exposure time: 90s.



Immunohistochemistry of paraffin-embedded mouse heart using TRIM21 antibody (CAB13547) at dilution of 1:100 (40x lens).



Immunofluorescence analysis of U2OS cells using TRIM21 antibody (CAB13547). Blue: DAPI for nuclear staining.