

TKT Rabbit Polyclonal Antibody



CAB13553

Product Information

Size:

20uL, 50uL, 100uL, 200uL

Observed MW:

Refer to figures

Calculated MW:

67kDa/68kDa

Applications:

IHC

Reactivity:

Human, Mouse, Rat

Protein Background

This gene encodes a thiamine-dependent enzyme which plays a role in the channeling of excess sugar phosphates to glycolysis in the pentose phosphate pathway. Alternatively spliced transcript variants encoding multiple isoforms have been observed for this gene.

Immunogen information

Gene ID:

7086

Uniprot

P29401

Synonyms:

TKT; HEL-S-48; HEL107; SDDHD; TK; TKT1

Antibody Information

Recommended dilutions:

IHC 1:50 - 1:200

Source:

Rabbit

Isotype:

IgG

Purification:

Affinity purification

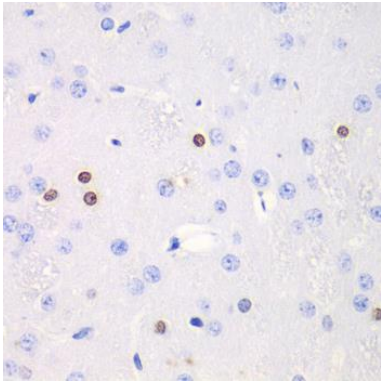
Immunogen:

Recombinant fusion protein containing a sequence corresponding to amino acids 1-280 of human TKT (NP_001128527.1).

Storage:

Store at -20°C. Avoid freeze / thaw cycles. Buffer: PBS with 0.02% sodium azide, 50% glycerol, pH7.3.

Product Images



Immunohistochemistry of paraffin-embedded rat brain using TKT antibody (CAB13553) at dilution of 1:100 (40x lens).