

USF1 Rabbit Polyclonal Antibody



CAB13560

Product Information

Size:

20uL, 50uL, 100uL, 200uL

Observed MW:

41kDa

Calculated MW:

27kDa/33kDa

Applications:

WB IHC

Reactivity:

Human, Mouse

Antibody Information

Recommended dilutions:

WB 1:500 - 1:2000 IHC 1:50
- 1:200

Source:

Rabbit

Isotype:

IgG

Purification:

Affinity purification

Protein Background

This gene encodes a member of the basic helix-loop-helix leucine zipper family, and can function as a cellular transcription factor. The encoded protein can activate transcription through pyrimidine-rich initiator (Inr) elements and E-box motifs. This gene has been linked to familial combined hyperlipidemia (FCHL). Alternative splicing of this gene results in multiple transcript variants. A related pseudogene has been defined on chromosome 21.

Immunogen information

Gene ID:

7391

Uniprot

P22415

Synonyms:

USF1; FCHL; FCHL1; HYPLIP1; MLTF; MLTFI; UEF; bHLHb11

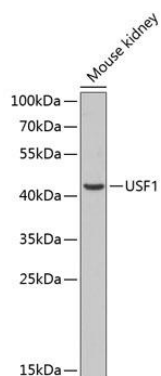
Immunogen:

Recombinant fusion protein containing a sequence corresponding to amino acids 1-310 of human USF1 (NP_009053.1).

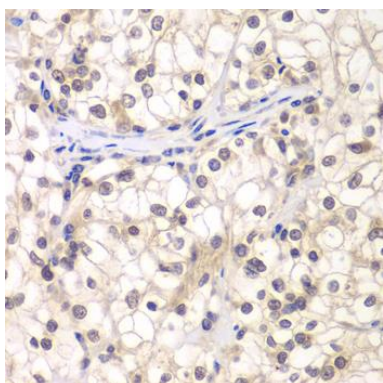
Storage:

Store at -20°C. Avoid freeze / thaw cycles. Buffer: PBS with 0.02% sodium azide, 50% glycerol, pH7.3.

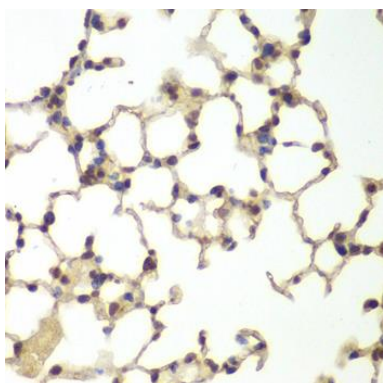
Product Images



Western blot analysis of extracts of mouse kidney, using USF1 antibody (CAB13560) at 1:1000 dilution. Secondary antibody: HRP Goat Anti-Rabbit IgG (H+L) (CABS014) at 1:10000 dilution. Lysates/proteins: 25ug per lane. Blocking buffer: 3% nonfat dry milk in TBST.



Immunohistochemistry of paraffin-embedded human kidney cancer using USF1 antibody (CAB13560) at dilution of 1:200 (40x lens).



Immunohistochemistry of paraffin-embedded mouse lung using USF1 antibody (CAB13560) at dilution of 1:200 (40x lens).