

# USP7 Rabbit Polyclonal Antibody



CAB13565

## Product Information

### Size:

20uL, 50uL, 100uL, 200uL

### Observed MW:

138kDa

### Calculated MW:

126kDa/128kDa

### Applications:

WB IHC IF

### Reactivity:

Human, Mouse, Rat

## Protein Background

The protein encoded by this gene belongs to the peptidase C19 family, which includes ubiquitinyl hydrolases. This protein deubiquitinates target proteins such as p53 (a tumor suppressor protein) and WASH (essential for endosomal protein recycling), and regulates their activities by counteracting the opposing ubiquitin ligase activity of proteins such as HDM2 and TRIM27, involved in the respective process. Mutations in this gene have been implicated in a neurodevelopmental disorder.

## Immunogen information

### Gene ID:

7874

### Uniprot

Q93009

### Synonyms:

USP7; HAUSP; TEF1

## Antibody Information

### Recommended dilutions:

WB 1:500 - 1:2000 IHC 1:50  
- 1:100 IF 1:50 - 1:100

### Source:

Rabbit

### Isotype:

IgG

### Purification:

Affinity purification

### Immunogen:

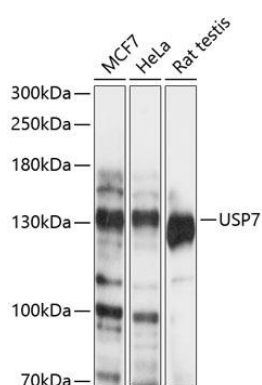
Recombinant fusion protein containing a sequence corresponding to amino acids 206-1102 of human USP7 (NP\_003461.2).

### Storage:

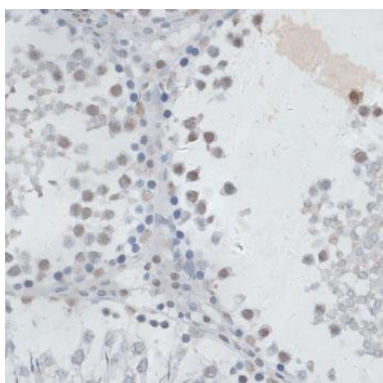
Store at -20°C. Avoid freeze / thaw cycles. Buffer: PBS with 0.02% sodium azide, 50% glycerol, pH7.3.

## Product Images

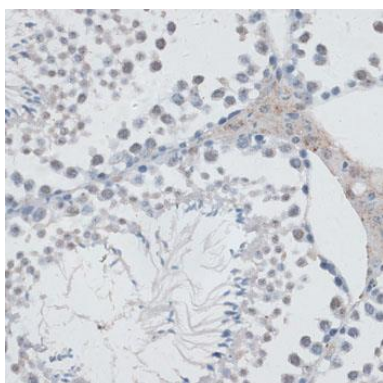
---



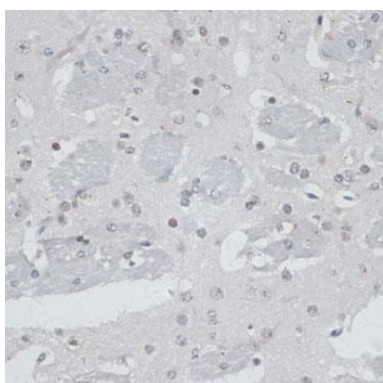
Western blot analysis of extracts of various cell lines, using USP7 antibody (CAB13565) at 1:1000 dilution. Secondary antibody: HRP Goat Anti-Rabbit IgG (H+L) (CABS014) at 1:10000 dilution. Lysates/proteins: 25ug per lane. Blocking buffer: 3% nonfat dry milk in TBST. Detection: ECL Basic Kit (CABM00020). Exposure time: 30s.



Immunohistochemistry of paraffin-embedded rat testis using USP7 antibody (CAB13565) at dilution of 1:100 (40x lens).



Immunohistochemistry of paraffin-embedded mouse testis using USP7 antibody (CAB13565) at dilution of 1:100 (40x lens).



Immunohistochemistry of paraffin-embedded mouse brain using USP7 antibody (CAB13565) at dilution of 1:100 (40x lens).