

ALDH4A1 Rabbit Polyclonal Antibody



CAB13569

Product Information

Size:

20uL, 50uL, 100uL, 200uL

Observed MW:

61kDa

Calculated MW:

55kDa/56kDa/61kDa

Applications:

WB IHC

Reactivity:

Human, Mouse

Antibody Information

Recommended dilutions:

WB 1:500 - 1:2000 IHC 1:50
- 1:200

Source:

Rabbit

Isotype:

IgG

Purification:

Affinity purification

Protein Background

This protein belongs to the aldehyde dehydrogenase family of proteins. This enzyme is a mitochondrial matrix NAD-dependent dehydrogenase which catalyzes the second step of the proline degradation pathway, converting pyrroline-5-carboxylate to glutamate. Deficiency of this enzyme is associated with type II hyperprolinemia, an autosomal recessive disorder characterized by accumulation of delta-1-pyrroline-5-carboxylate (P5C) and proline. Alternatively spliced transcript variants encoding different isoforms have been identified for this gene.

Immunogen information

Gene ID:

8659

Uniprot

P30038

Synonyms:

ALDH4A1; ALDH4; P5CD; P5CDh

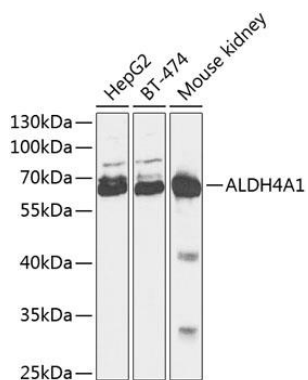
Immunogen:

Recombinant fusion protein containing a sequence corresponding to amino acids 354-563 of human ALDH4A1 (NP_003739.2).

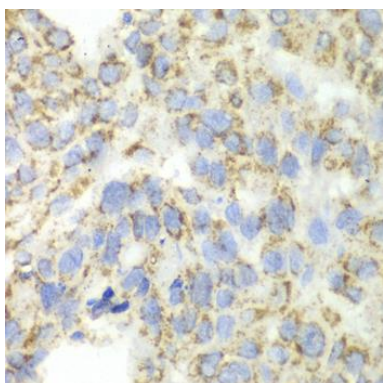
Storage:

Store at -20°C. Avoid freeze / thaw cycles. Buffer: PBS with 0.02% sodium azide, 50% glycerol, pH7.3.

Product Images



Western blot analysis of extracts of various cell lines, using ALDH4A1 antibody (CAB13569) at 1:1000 dilution. Secondary antibody: HRP Goat Anti-Rabbit IgG (H+L) (CABS014) at 1:10000 dilution. Lysates/proteins: 25ug per lane. Blocking buffer: 3% nonfat dry milk in TBST.



Immunohistochemistry of paraffin-embedded human esophageal cancer using ALDH4A1 antibody (CAB13569) at dilution of 1:100 (40x lens).