

PICK1 Rabbit Polyclonal Antibody



CAB13574

Product Information

Size:

20uL, 50uL, 100uL, 200uL

Observed MW:

Calculated MW:

39kDa/46kDa

Applications:

IHC IF

Reactivity:

Human

Antibody Information

Recommended dilutions:

IHC 1:50 - 1:200 IF 1:50 - 1:200

Source:

Rabbit

Isotype:

IgG

Purification:

Affinity purification

Protein Background

The protein encoded by this gene contains a PDZ domain, through which it interacts with protein kinase C, alpha (PRKCA). This protein may function as an adaptor that binds to and organizes the subcellular localization of a variety of membrane proteins. It has been shown to interact with multiple glutamate receptor subtypes, monoamine plasma membrane transporters, as well as non-voltage gated sodium channels, and may target PRKCA to these membrane proteins and thus regulate their distribution and function. This protein has also been found to act as an anchoring protein that specifically targets PRKCA to mitochondria in a ligand-specific manner. Three transcript variants encoding the same protein have been found for this gene.

Immunogen information

Gene ID:

9463

Uniprot

Q9NRD5

Synonyms:

PICK1; PICK; PRKCABP

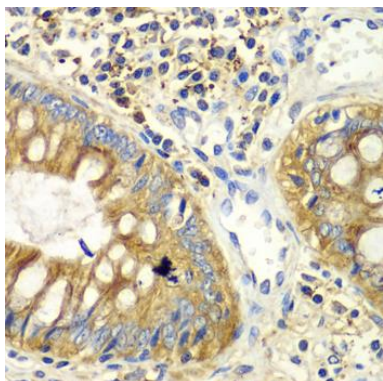
Immunogen:

A synthetic peptide corresponding to a sequence within amino acids 260-360 of human PICK1 (NP_036539.1).

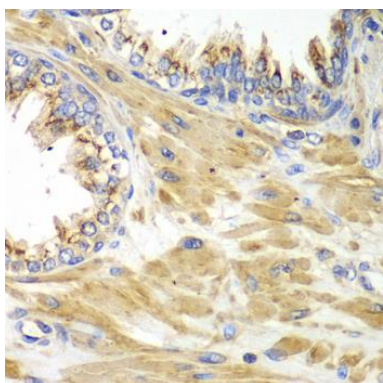
Storage:

Store at -20°C. Avoid freeze / thaw cycles. Buffer: PBS with 0.02% sodium azide, 50% glycerol, pH7.3.

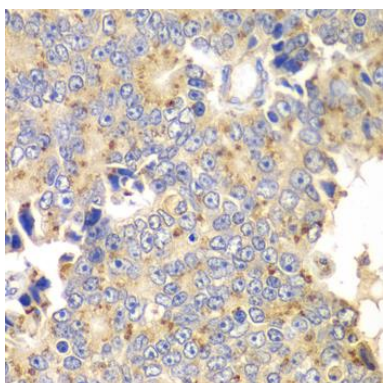
Product Images



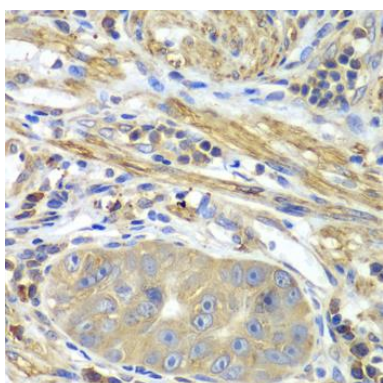
Immunohistochemistry of paraffin-embedded human colon using PICK1 antibody (CAB13574) at dilution of 1:100 (40x lens).



Immunohistochemistry of paraffin-embedded human prostate using PICK1 antibody (CAB13574) at dilution of 1:100 (40x lens).



Immunohistochemistry of paraffin-embedded human prostate cancer using PICK1 antibody (CAB13574) at dilution of 1:100 (40x lens).



Immunohistochemistry of paraffin-embedded human gastric cancer using PICK1 antibody (CAB13574) at dilution of 1:100 (40x lens).