

# AKR1A1 Rabbit Polyclonal Antibody



CAB13577

## Product Information

### Size:

20uL, 50uL, 100uL, 200uL

### Observed MW:

37kDa

### Calculated MW:

36kDa

### Applications:

WB IHC IF

### Reactivity:

Human, Mouse, Rat

## Protein Background

This gene encodes a member of the aldo/keto reductase superfamily, which consists of more than 40 known enzymes and proteins. This member, also known as aldehyde reductase, is involved in the reduction of biogenic and xenobiotic aldehydes and is present in virtually every tissue. Multiple alternatively spliced transcript variants of this gene exist, all encoding the same protein.

## Immunogen information

### Gene ID:

10327

### Uniprot

P14550

### Synonyms:

AKR1A1; ALDR1; ALR; ARM; DD3; HEL-S-6

## Antibody Information

### Recommended dilutions:

WB 1:500 - 1:2000 IHC 1:50  
- 1:200 IF 1:50 - 1:200

### Source:

Rabbit

### Isotype:

IgG

### Purification:

Affinity purification

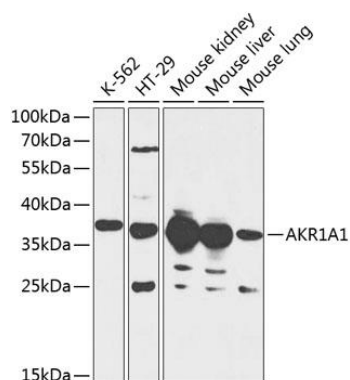
### Immunogen:

Recombinant fusion protein containing a sequence corresponding to amino acids 1-325 of human AKR1A1 (NP\_006057.1).

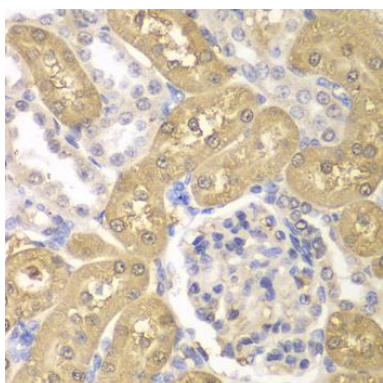
### Storage:

Store at -20°C. Avoid freeze / thaw cycles. Buffer: PBS with 0.02% sodium azide, 50% glycerol, pH7.3.

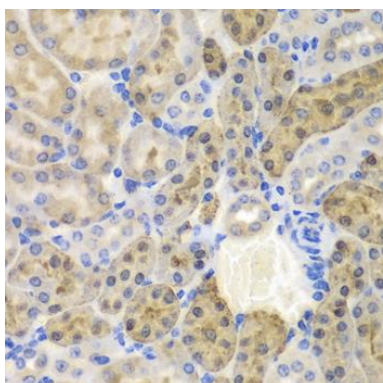
## Product Images



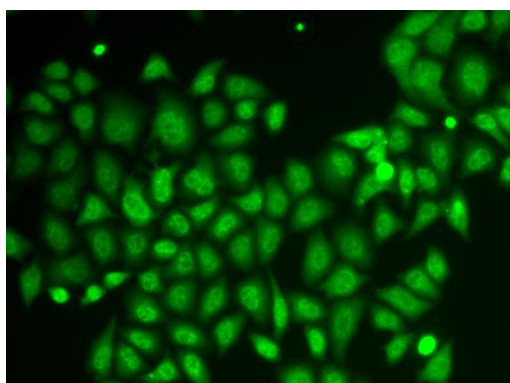
Western blot analysis of extracts of various cell lines, using AKR1A1 antibody (CAB13577) at 1:1000 dilution. Secondary antibody: HRP Goat Anti-Rabbit IgG (H+L) (CABS014) at 1:10000 dilution. Lysates/proteins: 25ug per lane. Blocking buffer: 3% nonfat dry milk in TBST.



Immunohistochemistry of paraffin-embedded rat kidney using AKR1A1 antibody (CAB13577) at dilution of 1:100 (40x lens).



Immunohistochemistry of paraffin-embedded mouse kidney using AKR1A1 antibody (CAB13577) at dilution of 1:100 (40x lens).



Immunofluorescence analysis of HeLa cells using AKR1A1 antibody (CAB13577).