

IGF2BP1 Rabbit Polyclonal Antibody



CAB13581

Product Information

Size:

20uL, 50uL, 100uL, 200uL

Observed MW:

70kDa

Calculated MW:

48kDa/63kDa

Applications:

WB IF IP

Reactivity:

Human, Mouse, Rat

Antibody Information

Recommended dilutions:

WB 1:500 - 1:2000 IF 1:50 -
1:200 IP 1:20 - 1:50

Source:

Rabbit

Isotype:

IgG

Purification:

Affinity purification

Protein Background

This gene encodes a member of the insulin-like growth factor 2 mRNA-binding protein family. The protein encoded by this gene contains four K homology domains and two RNA recognition motifs. It functions by binding to the mRNAs of certain genes, including insulin-like growth factor 2, beta-actin and beta-transducin repeat-containing protein, and regulating their translation. Two transcript variants encoding different isoforms have been found for this gene.

Immunogen information

Gene ID:

10642

Uniprot

Q9NZI8

Synonyms:

IGF2BP1; CRD-BP; CRDBP; IMP-1; IMP1; VICKZ1; ZBP1

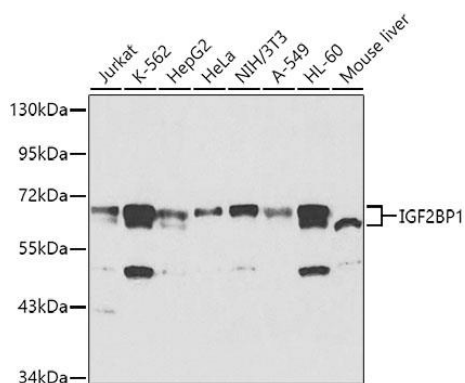
Immunogen:

A synthetic peptide corresponding to a sequence within amino acids 480 to the C-terminus of human IGF2BP1 (NP_006537.3).

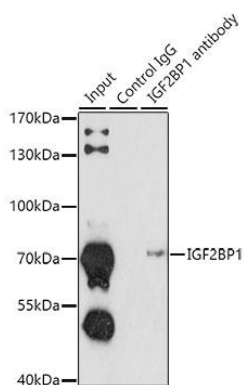
Storage:

Store at -20°C. Avoid freeze / thaw cycles. Buffer: PBS with 0.02% sodium azide, 50% glycerol, pH7.3.

Product Images



Western blot analysis of extracts of various cell lines, using IGF2BP1 antibody (CAB13581) at 1:1000 dilution. Secondary antibody: HRP Goat Anti-Rabbit IgG (H+L) (CABS014) at 1:10000 dilution. Lysates/proteins: 25ug per lane. Blocking buffer: 3% nonfat dry milk in TBST.



Immunoprecipitation analysis of 200ug extracts of K562 cells using 1ug IGF2BP1 antibody (CAB13581). Western blot was performed from the immunoprecipitate using IGF2BP1 antibody (CAB13581) at a dilution of 1:1000.