

# RPH3A Rabbit Polyclonal Antibody



CAB13584

## Product Information

### Size:

20uL, 50uL, 100uL, 200uL

### Observed MW:

77kDa

### Calculated MW:

76kDa

### Applications:

WB IHC

### Reactivity:

Human, Mouse, Rat

## Protein Background

The protein encoded by this gene is thought to be an effector for RAB3A, which is a small G protein that acts in the late stages of neurotransmitter exocytosis. The encoded protein may be involved in neurotransmitter release and synaptic vesicle traffic.

## Immunogen information

### Gene ID:

22895

### Uniprot

Q9Y2J0

### Synonyms:

RPH3A

## Antibody Information

### Recommended dilutions:

WB 1:500 - 1:2000 IHC 1:50  
- 1:200

### Source:

Rabbit

### Isotype:

IgG

### Purification:

Affinity purification

### Immunogen:

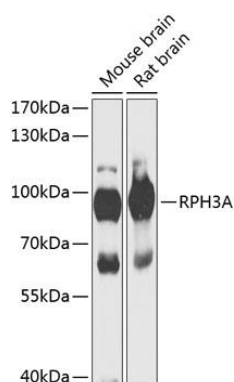
Recombinant fusion protein containing a sequence corresponding to amino acids 1-280 of human RPH3A (NP\_055769.2).

### Storage:

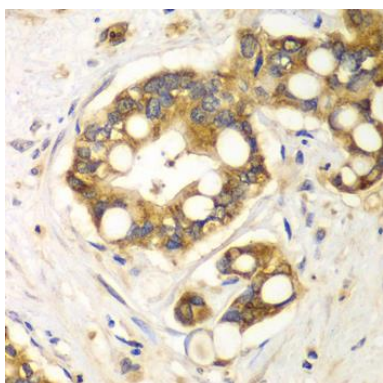
Store at -20°C. Avoid freeze / thaw cycles. Buffer: PBS with 0.02% sodium azide, 50% glycerol, pH7.3.

## Product Images

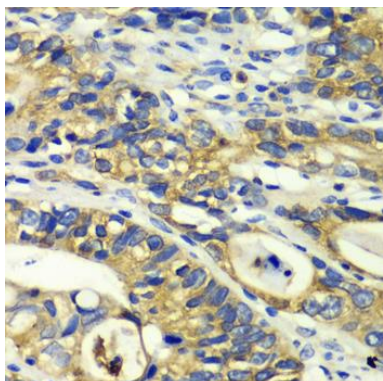
---



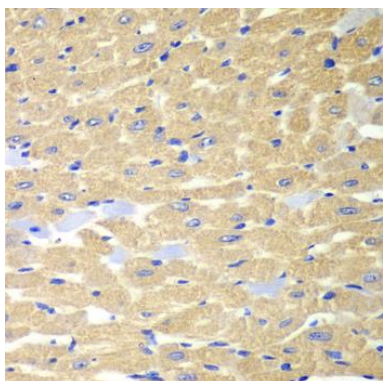
Western blot analysis of extracts of various cell lines, using RPH3A antibody (CAB13584) at 1:1000 dilution. Secondary antibody: HRP Goat Anti-Rabbit IgG (H+L) (CABS014) at 1:10000 dilution. Lysates/proteins: 25ug per lane. Blocking buffer: 3% nonfat dry milk in TBST. Detection: ECL Basic Kit (CABM00020). Exposure time: 10s.



Immunohistochemistry of paraffin-embedded human liver cancer using RPH3A antibody (CAB13584) at dilution of 1:100 (40x lens).



Immunohistochemistry of paraffin-embedded human colon carcinoma using RPH3A antibody (CAB13584) at dilution of 1:100 (40x lens).



Immunohistochemistry of paraffin-embedded mouse heart using RPH3A antibody (CAB13584) at dilution of 1:100 (40x lens).