

LSM4 Rabbit Polyclonal Antibody



CAB13588

Product Information

Size:

20uL, 50uL, 100uL, 200uL

Observed MW:

14kDa

Calculated MW:

15kDa

Applications:

WB IHC IF IP

Reactivity:

Human

Protein Background

This gene encodes a member of the LSm family of RNA-binding proteins. LSm proteins form stable heteromers that bind specifically to the 3'-terminal oligo(U) tract of U6 snRNA and may play a role in pre-mRNA splicing by mediating U4/U6 snRNP formation. Alternatively spliced transcript variants encoding multiple isoforms have been observed for this gene.

Immunogen information

Gene ID:

25804

Uniprot

Q9Y4Z0

Synonyms:

LSM4; GRP; YER112W

Antibody Information

Recommended dilutions:

WB 1:500 - 1:2000 IHC 1:50
- 1:200 IF 1:50 - 1:200 IP
1:20 - 1:50

Source:

Rabbit

Isotype:

IgG

Purification:

Affinity purification

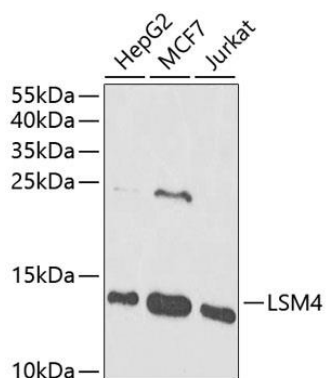
Immunogen:

Recombinant fusion protein containing a sequence corresponding to amino acids 1-139 of human LSM4 (NP_036453.1).

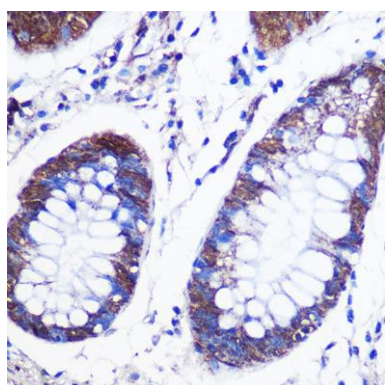
Storage:

Store at -20°C. Avoid freeze / thaw cycles. Buffer: PBS with 0.02% sodium azide, 50% glycerol, pH7.3.

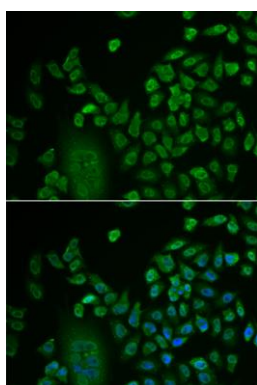
Product Images



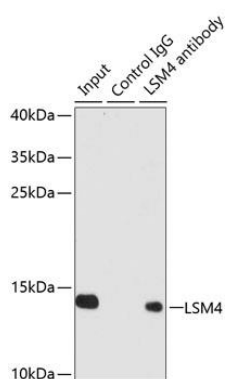
Western blot analysis of extracts of various cell lines, using LSM4 antibody (CAB13588) at 1:1000 dilution. Secondary antibody: HRP Goat Anti-Rabbit IgG (H+L) (CABS014) at 1:10000 dilution. Lysates/proteins: 25ug per lane. Blocking buffer: 3% nonfat dry milk in TBST. Detection: ECL Enhanced Kit (CABM00021). Exposure time: 5s.



Immunohistochemistry of paraffin-embedded human colon using LSM4 Rabbit pAb (CAB13588) at dilution of 1:100 (40x lens).



Immunofluorescence analysis of HeLa cells using LSM4 antibody (CAB13588) at dilution of 1:50. Blue: DAPI for nuclear staining.



Immunoprecipitation analysis of 200ug extracts of Jurkat cells using 1ug LSM4 antibody (CAB13588). Western blot was performed from the immunoprecipitate using LSM4 antibody (CAB13588) at a dilution of 1:1000.