

# ACSS2 Rabbit Polyclonal Antibody



CAB13596

## Product Information

### Size:

20uL, 50uL, 100uL, 200uL

### Observed MW:

78kDa

### Calculated MW:

78kDa/80kDa

### Applications:

WB IHC IF

### Reactivity:

Human, Mouse, Rat

## Protein Background

This gene encodes a cytosolic enzyme that catalyzes the activation of acetate for use in lipid synthesis and energy generation. The protein acts as a monomer and produces acetyl-CoA from acetate in a reaction that requires ATP. Expression of this gene is regulated by sterol regulatory element-binding proteins, transcription factors that activate genes required for the synthesis of cholesterol and unsaturated fatty acids. Alternative splicing results in multiple transcript variants.

## Immunogen information

### Gene ID:

55902

### Uniprot

Q9NR19

### Synonyms:

ACSS2; ACAS2; ACECS; ACS; ACSA; dJ1161H23.1

## Antibody Information

### Recommended dilutions:

WB 1:500 - 1:2000 IHC 1:50  
- 1:200 IF 1:50 - 1:200

### Source:

Rabbit

### Isotype:

IgG

### Purification:

Affinity purification

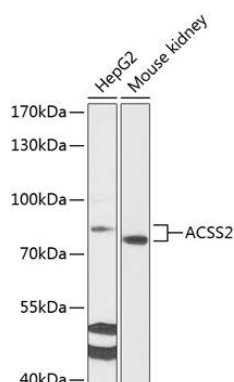
### Immunogen:

Recombinant fusion protein containing a sequence corresponding to amino acids 367-606 of human ACSS2 (NP\_001229322.1).

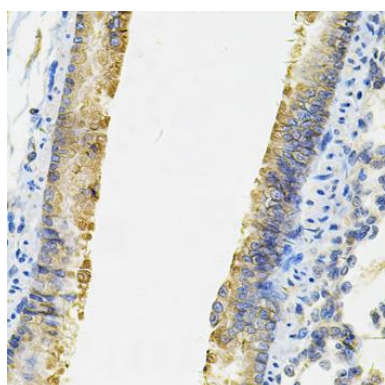
### Storage:

Store at -20°C. Avoid freeze / thaw cycles. Buffer: PBS with 0.02% sodium azide, 50% glycerol, pH7.3.

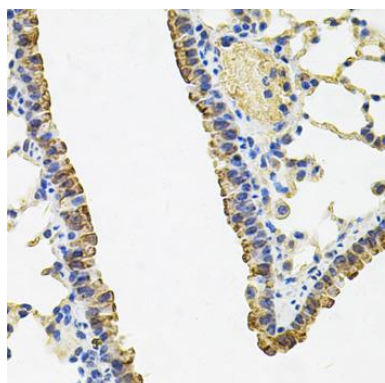
## Product Images



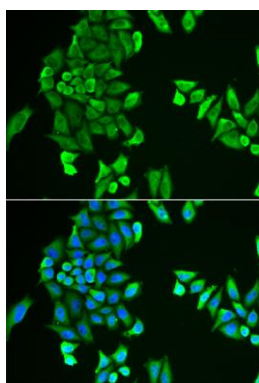
Western blot analysis of extracts of various cell lines, using ACSS2 antibody (CAB13596) at 1:1000 dilution. Secondary antibody: HRP Goat Anti-Rabbit IgG (H+L) (CABS014) at 1:10000 dilution. Lysates/proteins: 25ug per lane. Blocking buffer: 3% nonfat dry milk in TBST. Detection: ECL Basic Kit (CABM00020). Exposure time: 90s.



Immunohistochemistry of paraffin-embedded rat lung using ACSS2 Antibody (CAB13596) at dilution of 1:100 (40x lens).



Immunohistochemistry of paraffin-embedded mouse lung using ACSS2 Antibody (CAB13596) at dilution of 1:100 (40x lens).



Immunofluorescence analysis of HeLa cells using ACSS2 antibody (CAB13596). Blue: DAPI for nuclear staining.