

# CD177 Rabbit Polyclonal Antibody



CAB13597

## Product Information

### Size:

20uL, 50uL, 100uL, 200uL

### Observed MW:

### Calculated MW:

15kDa/27kDa/46kDa

### Applications:

IF

### Reactivity:

Human

## Antibody Information

### Recommended dilutions:

IF 1:50 - 1:200

### Source:

Rabbit

### Isotype:

IgG

### Purification:

Affinity purification

## Protein Background

This gene encodes a glycosyl-phosphatidylinositol (GPI)-linked cell surface glycoprotein that plays a role in neutrophil activation. The protein can bind platelet endothelial cell adhesion molecule-1 and function in neutrophil transmigration. Mutations in this gene are associated with myeloproliferative diseases. Over-expression of this gene has been found in patients with polycythemia rubra vera. Autoantibodies against the protein may result in pulmonary transfusion reactions, and it may be involved in Wegener's granulomatosis. A related pseudogene, which is adjacent to this gene on chromosome 19, has been identified.

## Immunogen information

### Gene ID:

57126

### Uniprot

Q8N6Q3

### Synonyms:

CD177; HNA-2a; HNA2A; NB1; NB1 GP; PRV-1; PRV1; NB1GP

### Immunogen:

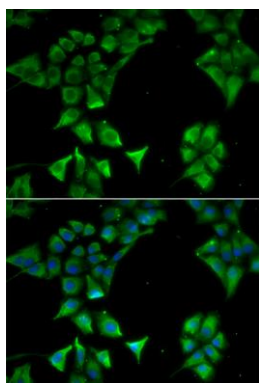
Recombinant fusion protein containing a sequence corresponding to amino acids 35-285 of human CD177 (NP\_065139.2).

### Storage:

Store at -20°C. Avoid freeze / thaw cycles. Buffer: PBS with 0.02% sodium azide, 50% glycerol, pH7.3.

## Product Images

---



Immunofluorescence analysis of HeLa cells using CD177 antibody (CAB13597). Blue: DAPI for nuclear staining.