

# APOBEC3G Rabbit Polyclonal Antibody



CAB13598

## Product Information

### Size:

20uL, 50uL, 100uL, 200uL

### Observed MW:

### Calculated MW:

9kDa/46kDa

### Applications:

WB IHC IF

### Reactivity:

Human, Mouse, Rat

## Antibody Information

### Recommended dilutions:

WB 1:500 - 1:2000 IHC 1:50  
- 1:200 IF 1:50 - 1:200

### Source:

Rabbit

### Isotype:

IgG

### Purification:

Affinity purification

## Protein Background

This gene is a member of the cytidine deaminase gene family. It is one of seven related genes or pseudogenes found in a cluster, thought to result from gene duplication, on chromosome 22. Members of the cluster encode proteins that are structurally and functionally related to the C to U RNA-editing cytidine deaminase APOBEC1. The protein encoded by this gene catalyzes site-specific deamination of both RNA and single-stranded DNA. The encoded protein has been found to be a specific inhibitor of human immunodeficiency virus-1 (HIV-1) infectivity.

## Immunogen information

### Gene ID:

60489

### Uniprot

Q9HC16

### Synonyms:

APOBEC3G; A3G; ARCD; ARP-9; ARP9; CEM-15; CEM15; MDS019;  
bK150C2.7; dJ494G10.1

### Immunogen:

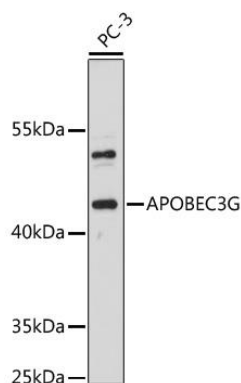
Recombinant fusion protein containing a sequence corresponding to amino acids 60-330 of human APOBEC3G (NP\_068594.1).

### Storage:

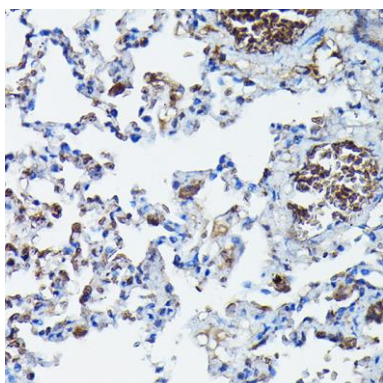
Store at -20°C. Avoid freeze / thaw cycles. Buffer: PBS with 0.02% sodium azide, 50% glycerol, pH7.3.

## Product Images

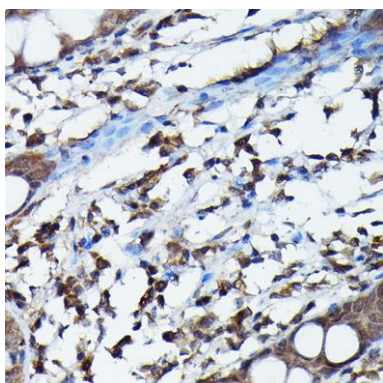
---



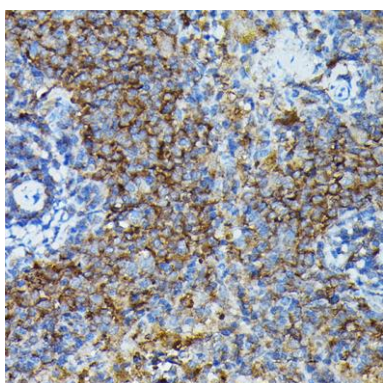
Western blot analysis of extracts of PC-3 cells, using APOBEC3G antibody (CAB13598) at 1:1000 dilution. Secondary antibody: HRP Goat Anti-Rabbit IgG (H+L) (CABS014) at 1:10000 dilution. Lysates/proteins: 25ug per lane. Blocking buffer: 3% nonfat dry milk in TBST. Detection: ECL Basic Kit (CABM00020). Exposure time: 5min.



Immunohistochemistry of paraffin-embedded rat lung using APOBEC3G Rabbit pAb (CAB13598) at dilution of 1:100 (40x lens).



Immunohistochemistry of paraffin-embedded human colon using APOBEC3G Rabbit pAb (CAB13598) at dilution of 1:100 (40x lens).



Immunohistochemistry of paraffin-embedded mouse spleen using APOBEC3G Rabbit pAb (CAB13598) at dilution of 1:100 (40x lens).